

North runway
(06L-24R)

South runway
(06R-24L)

SOUNDSCAPE REPORT **YEAR 2022**

February 2023

Soundscape Report 2022

Highlights

In 2022: 59,525 complaints filed by 392 people

Compared to 2019 (year of reference):

- The total number of complaints increased by 17% while the number of complainants decreased by 60%.
- The number of complaints linked to an air movement other than YUL or YMX decreased by 35%.

YUL: 58,790 complaints filed by 348 people

- The number of air movements decreased by 24% compared to 2019 while the number of complaints increased by 22%.
- The number of complainants decreased by 63%. For the year 2022, 77% of the complaints, or 45,514 complaints, were filed by 3 people.
- In 2022, 18% of air movements were operated with new generation aircraft (A220, A321Neo, B738 Max).
- In 2022, the north runway was closed from March 14 to June 23 and from October 17 to November 11. During these periods, flights were assigned to the south runway whose flight path overflies south St-Laurent, Town of Mount-Royal, Villeray-St-Michel-Parc-Extension and Rosemont-La-Petite-Patrie.

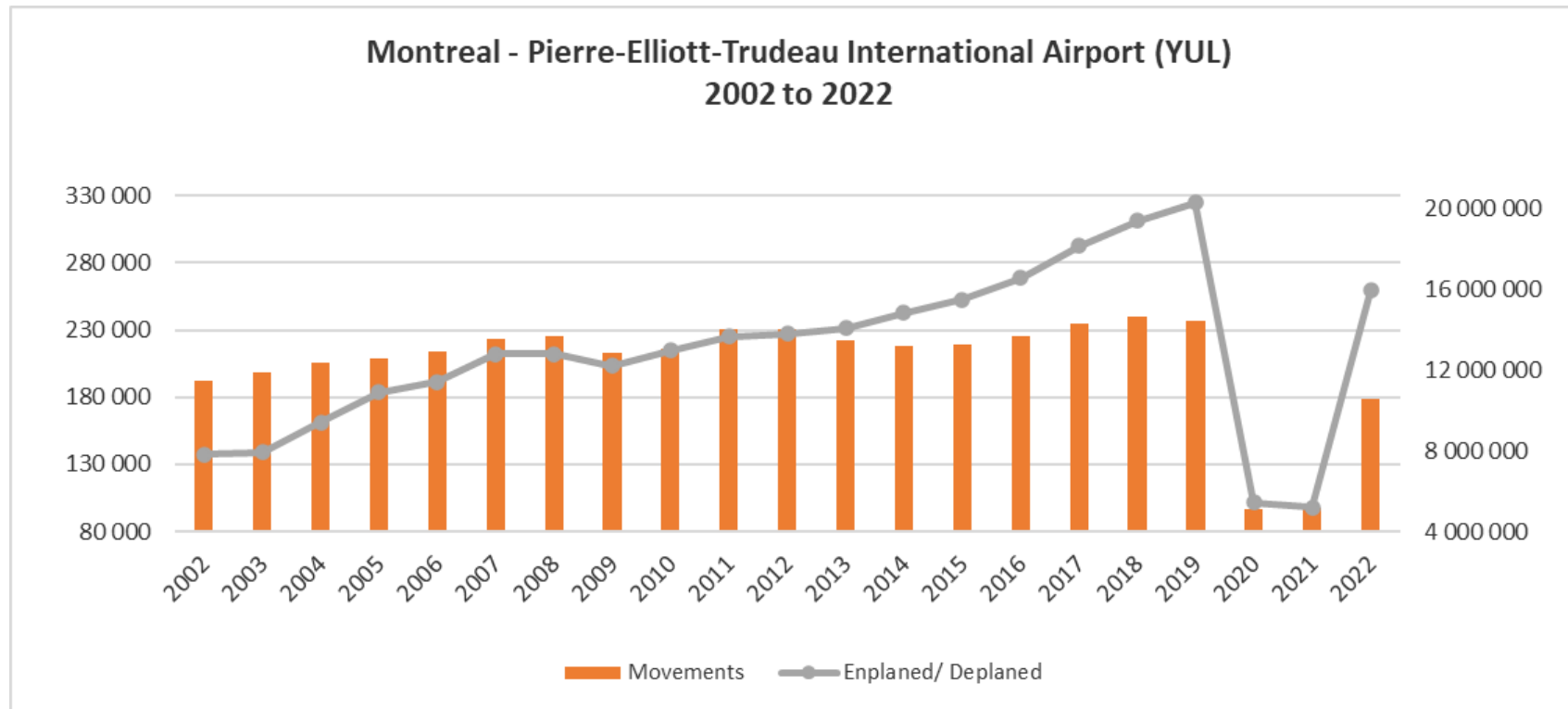
Soundscape Report 2022

Actions

- March 8 and 9 – 4 virtual information meetings were held by ADM and NAV CANADA to inform citizens on the alternative departure procedures put in place to ensure the flow of operations during the north runway closure.
- Section of the web site with the recordings of these meetings, the presentations and an FAQ as well as updates on the construction work.
- Newsletters sent out to inform citizens on the extraordinary situations caused by weather conditions as well as the difficulties of staff availability and the rapid resumption of activities that generated significant delays in airport operations and an increase in exemptions granted for departures and arrivals during restricted hours.

Soundscape Report 2022

YUL Movements



Soundscape Report 2022

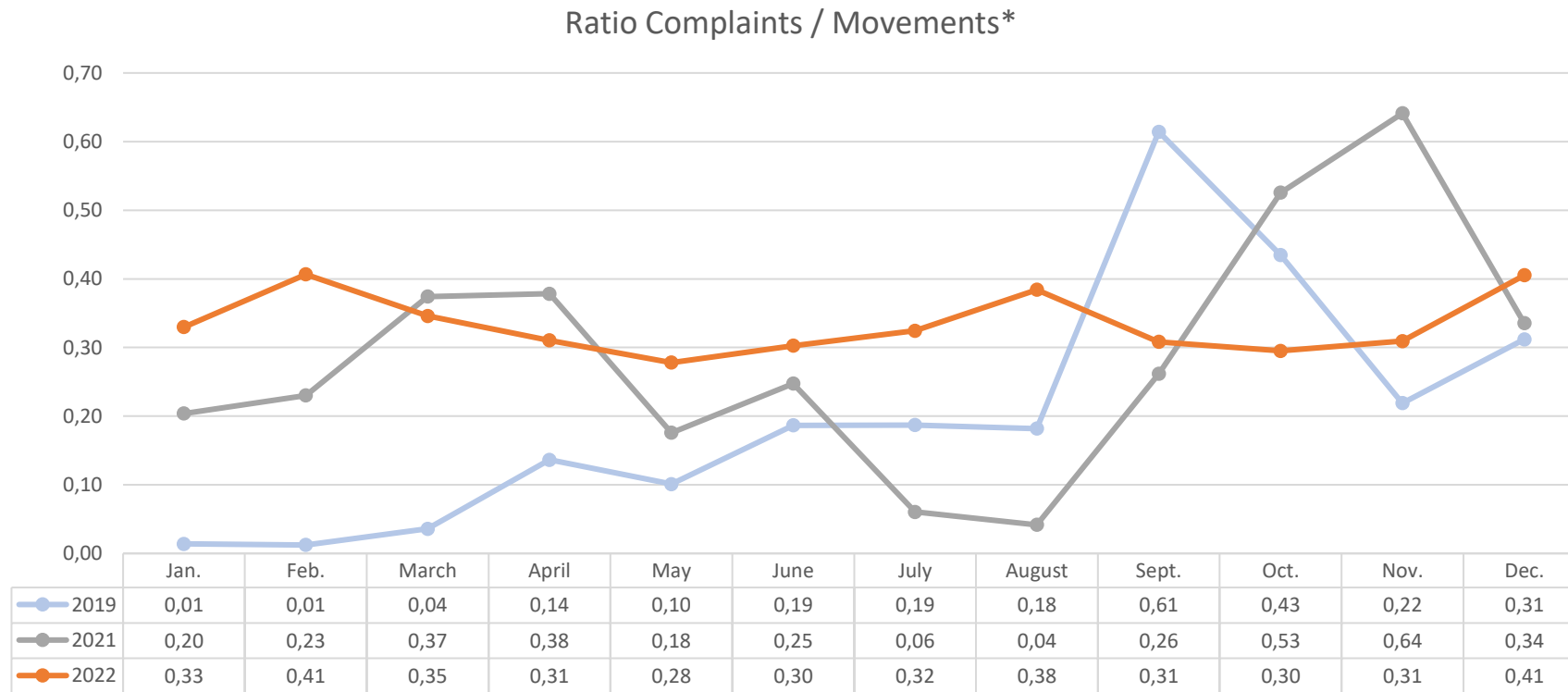
Overview (2019-2021-2022)

	2019	2021	2022
Complaints – Total	50,709	30,464	59,525
Complainants – Total	979	247	392
Complaints – YUL	48,273	29,811	58,790
Complainants – YUL	934	195	348
Complaints – YMX	82	56	50
Complainants – YMX	30	10	17
Complaints – Other airports	763	456	498
Complaints not linked to a flight *	1,591	48	187
Number of movements – YUL	235,988	97,766	178,727
Ad-hoc exemptions – YUL	1,086	146	1,339

* Complaints that the ANOMS system could not link to a flight – for security reasons, some government flights as well as military or police operations are not accessible in this system.

Soundscape Report 2022

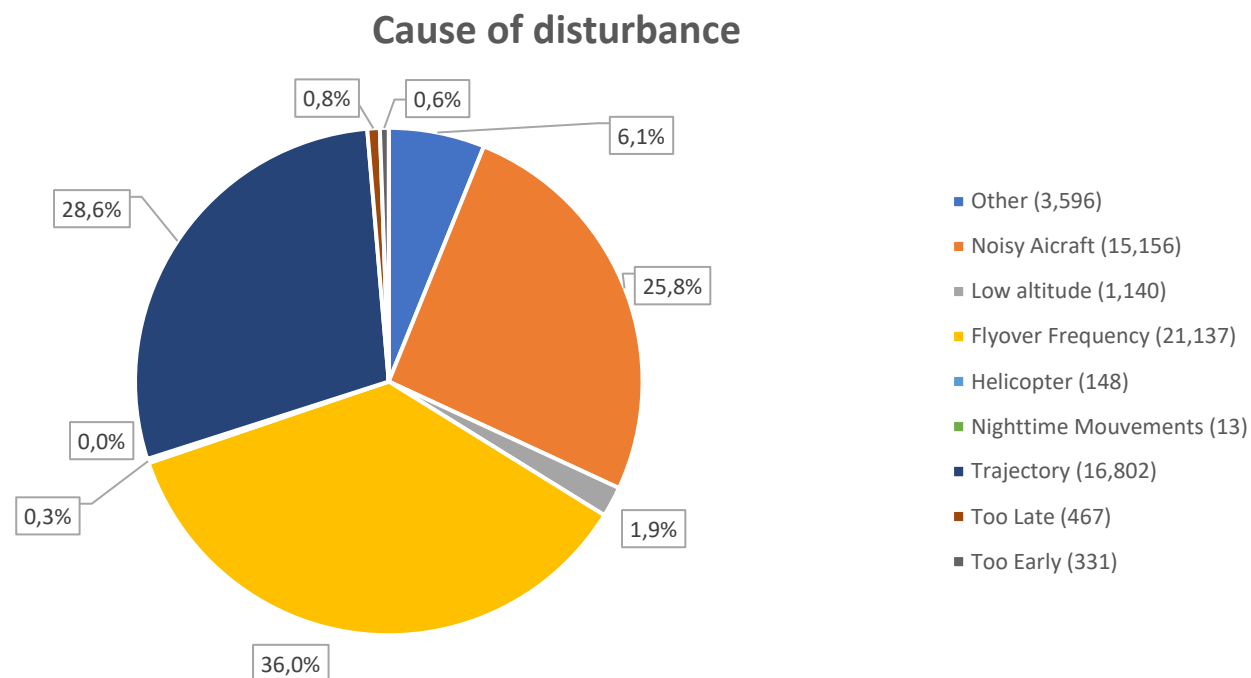
YUL – Ratio complaints / Movements



* ANOMS Movements

Soundscape Report 2022

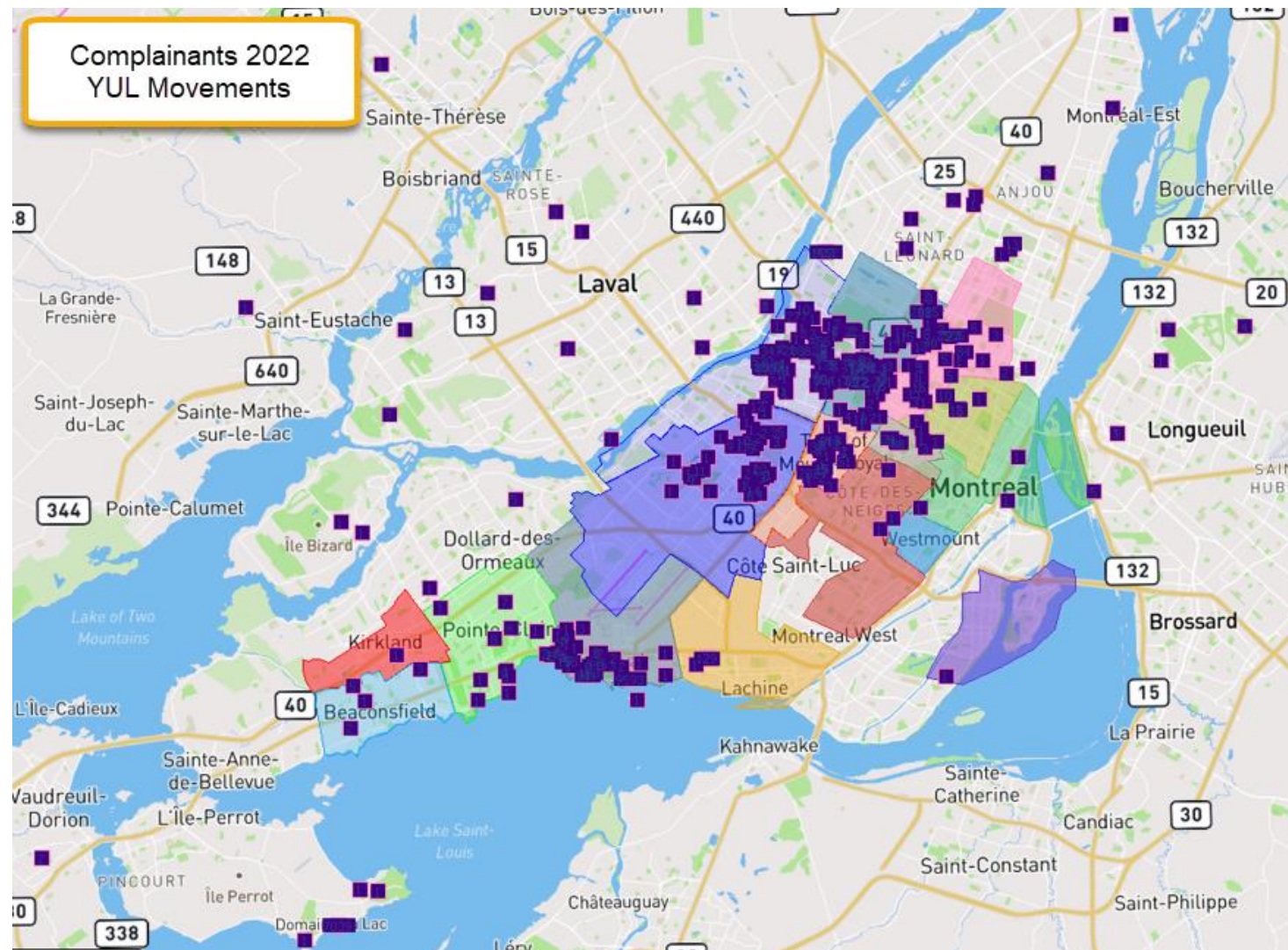
Complaints – YUL Movements



These are the causes of disturbance identified by the complainer when submitting their complaints.

Soundscape Report 2022

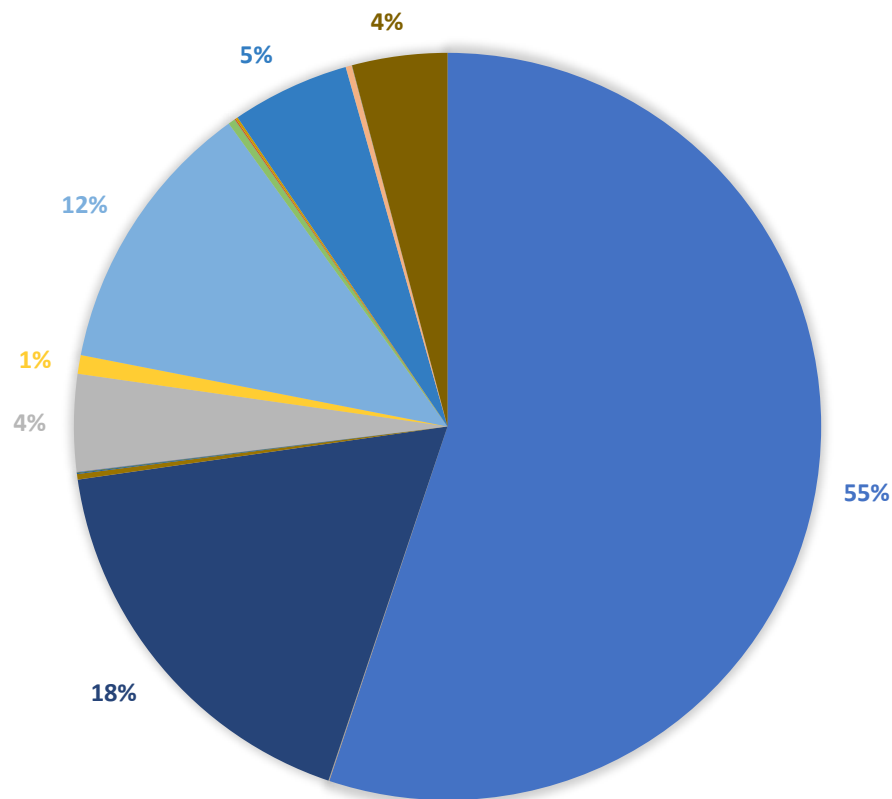
Complaints – YUL Movements



Soundscape Report 2022

Complaints – YUL Movements

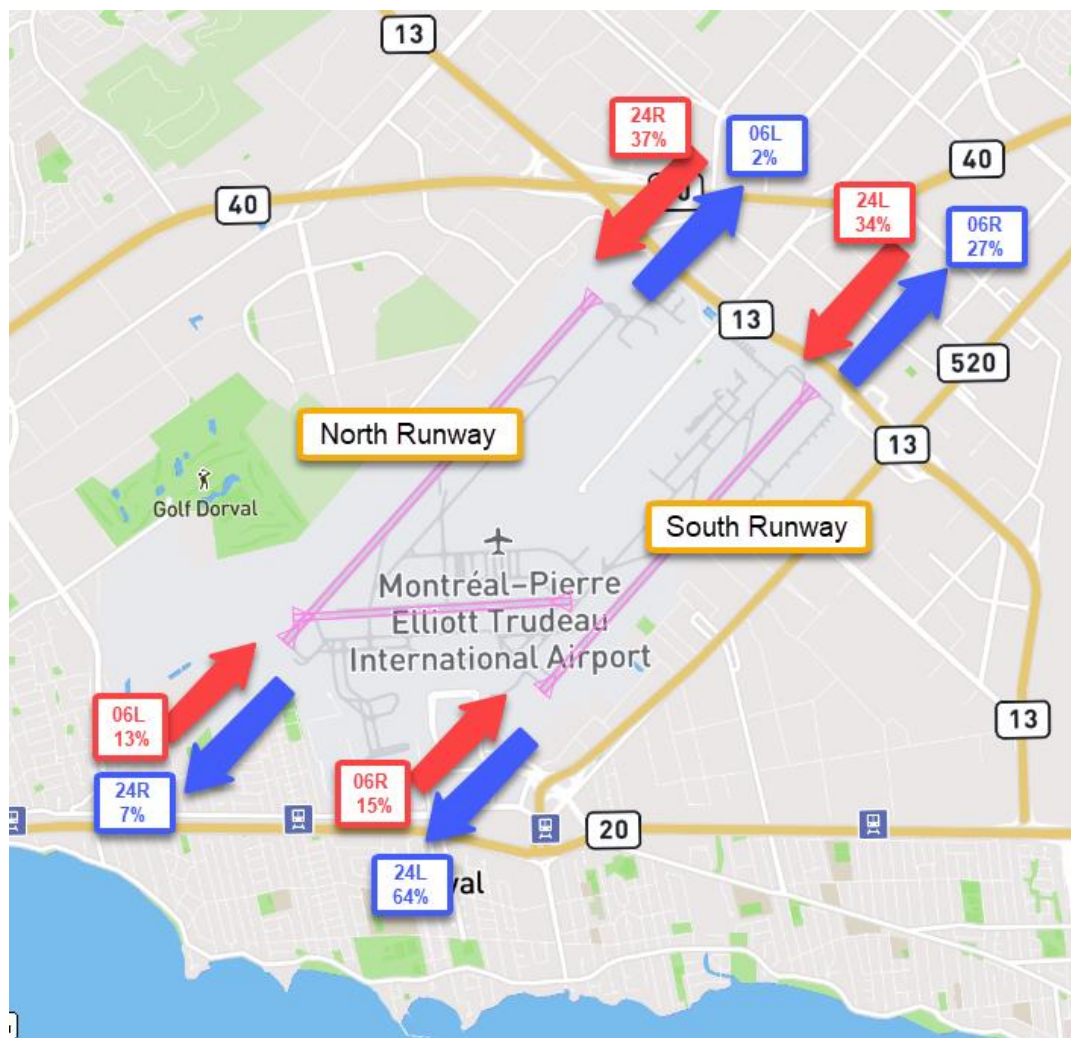
DISTRIBUTION OF COMPLAINTS



Ahuntsic-Cartierville	(32 408)
Anjou	(6)
Beaconsfield	(11)
Coteau-Du-Lac	(1)
Côte-des-Neiges-NDG	(5)
Dollard-des-Ormeaux	(1)
Dorval	(10 323)
Ile-Bizard-SteGenevieve	(2)
Kirkland	(1)
Lachine	(139)
Laval	(25)
Longueuil	(18)
Merc-Hoch-Maisonnette	(18)
Montréal-Est	(6)
Montréal-Nord	(2 455)
Mont-Royal	(476)
N.-D. de L'Île Perrot	(7 042)
Outremont	(178)
Pierrefonds-Roxboro	(5)
Plateau Mont-Royal	(31)
Pointe-aux-Trembles	(1)
Pointe-Claire	(54)
Rosemont-La-Petite-Patrie	(2 999)
Saint-Eustache	(1)
Saint-Lambert	(5)
Saint-Laurent	(148)
Saint-Léonard	(2)
Ste-Thérèse	(1)
Terrebonne	(1)
Varenes	(3)
Vaudreuil-Dorion	(2)
Verdun	(1)
Ville-Marie	(2)
Villeray-St-Michel-Parc-Extension	(2 419)

Soundscape Report 2022

YUL Distribution of air movements



Distribution of complaints by runway:

	% of total of complaints
Departures southwesterly winds	18%
South runway (24L)	18%
North runway (24R)	0,4%
Departures northeasterly winds	19%
South runway (06R)	18%
North runway (06L)	1%

Arrivals southwesterly winds	52%
South runway (24L)	8%
North runway (24R)	44%
Arrivals northeasterly winds	11%
South runway (06R)	5%
North runway (06L)	6%

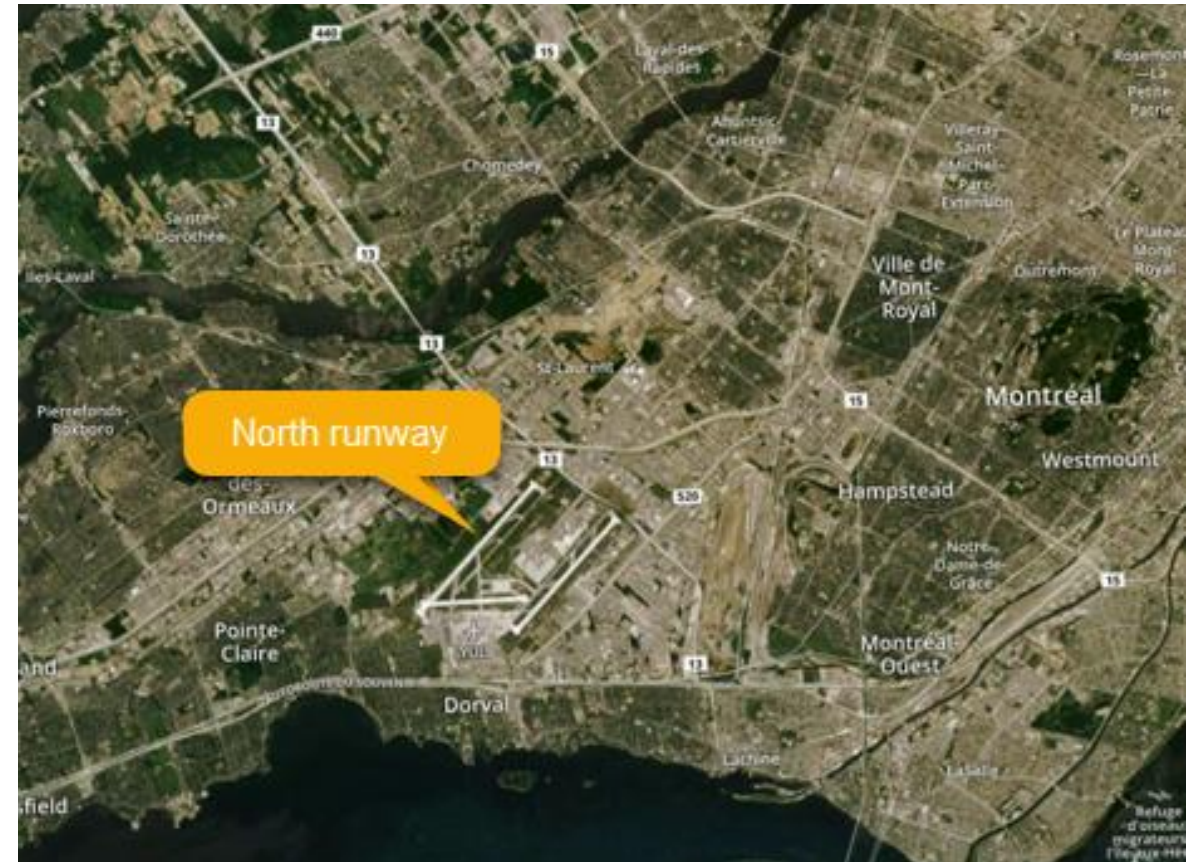
Soundscape Report 2022

YUL Runway closures

North runway (06L-24R) – Runway rehabilitation work continued in 2022

(north Doval, Pointe-Claire, north Saint-Laurent, Ahuntsic-Cartierville)

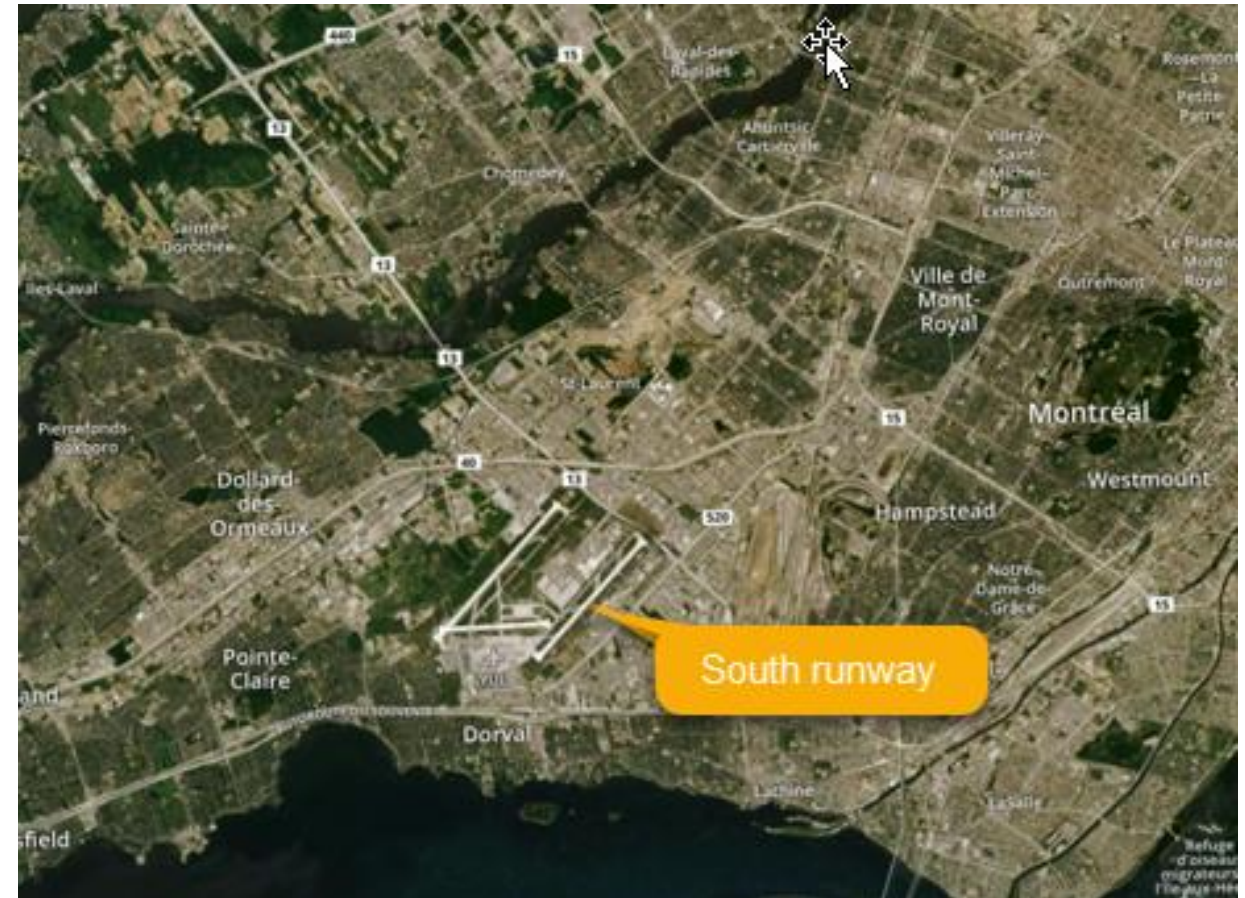
- January to March 14 – operational
- **From March 14 to June 23 – closed**
 - Alternative departure flight paths in place to ensure flow of operations
- From June 23 to October 17 – operational
- **From October 17 to November 11 – closed**
- As of November 11 – operational
- Several short-term closures for maintenance work (Information posted on WebTrak)



Soundscape Report 2022

YUL Runway closures

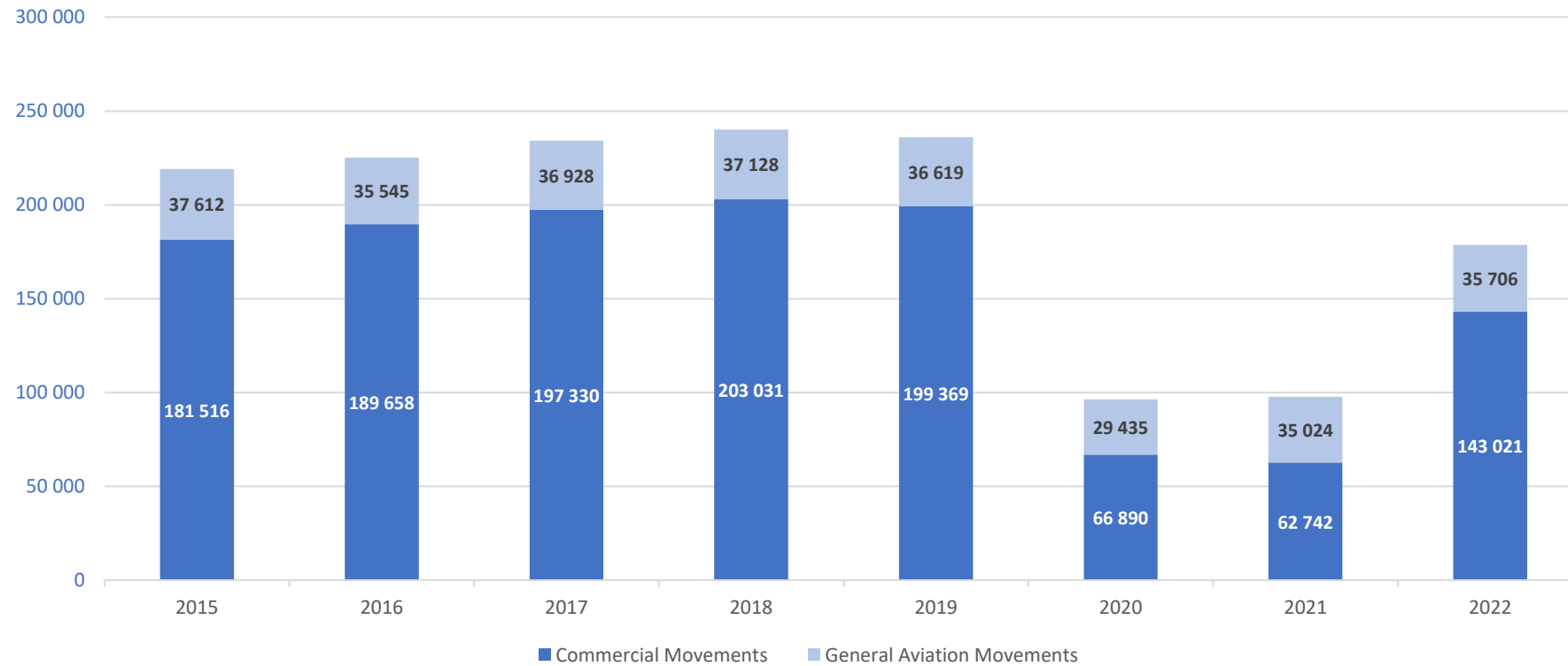
- **South runway (06R-24L) – Maintenance work**
(south Dorval, south Saint-Laurent, Town of Mount-Royal, Villeray-St-Michel-Parc-Extension, Rosemont-La-Petite-Patrie)
- From January to October 3 – operational (single runway from March 14 to June 23)
- **From October 3 to 14 – closed**
- As of October 14 –operational
- Several short-term closures for maintenance work
(Information posted on WebTrak)



Soundscape Report 2022

YUL Movements

Movements 2015-2022

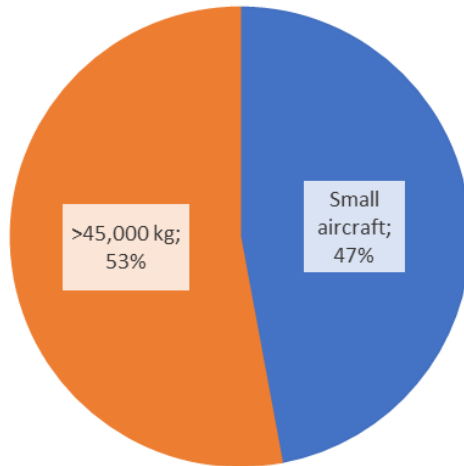


General Aviation: Représente all movements other than commercial at YUL

Soundscape Report 2022

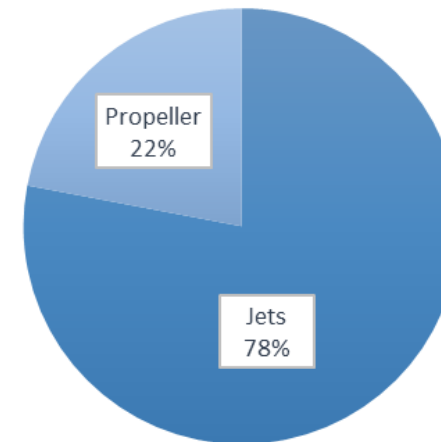
YUL Movements

DISTRIBUTION OF AIR MOVEMENTS
YEAR 2022, BY WEIGHT



Aircraft >45,000 kg: large planes (Airbus – Boeing)
Small aircraft: less than 45,000 kg, small jets and propeller planes (Embraer, Dash-8)

DISTRIBUTION OF AIR MOVEMENTS
YEAR 2022, BY AIRCRAFT TYPE



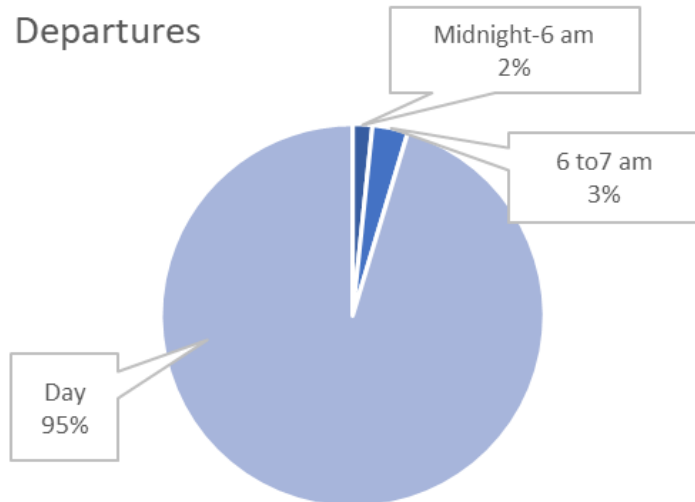
Jets – includes large planes (Airbus, Boeing) and small jets (Embraer, CRJ)
Propeller – all turboprop and propeller aircraft (Dash-8, Beech)

Soundscape Report 2022

YUL Movements

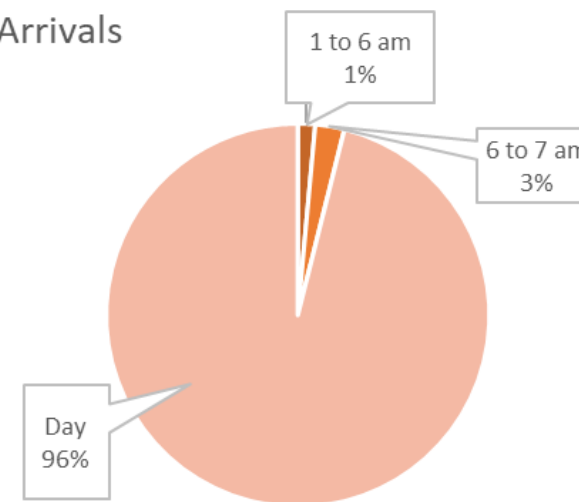
Distribution of movements 2022

Departures



Distribution of movements 2022

Arrivals



Soundscape Report 2022

YUL Movements – Restricted Hours

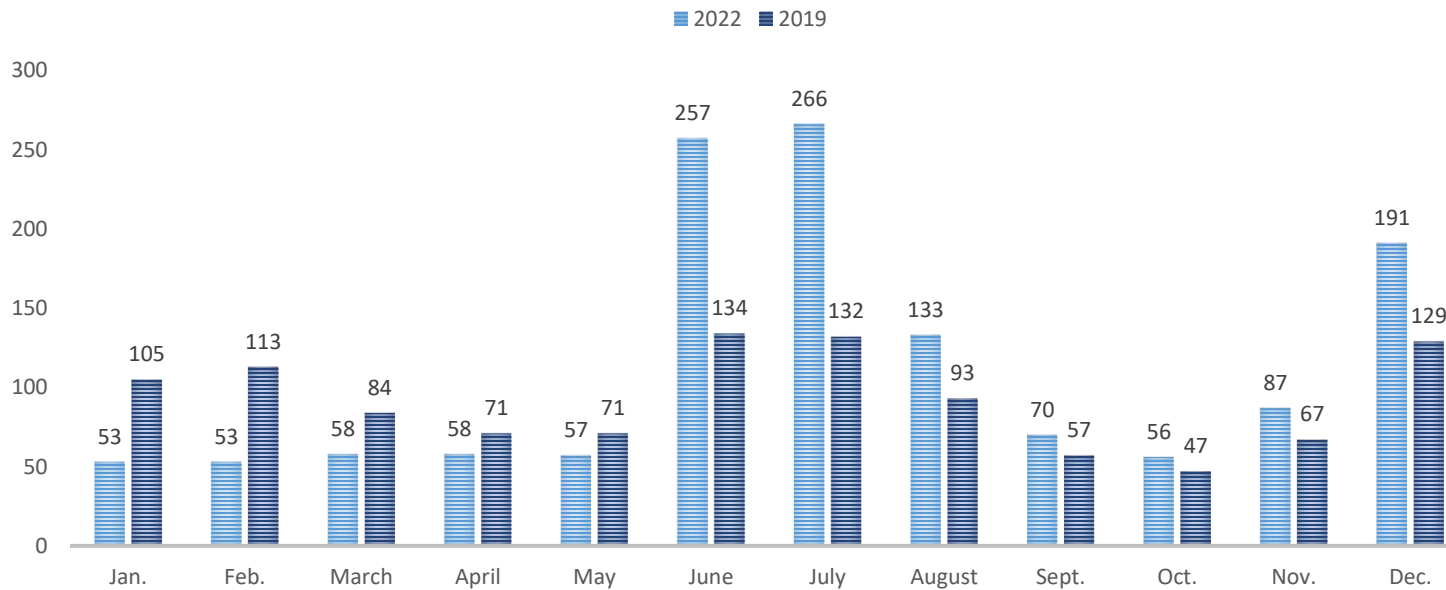
	Exemptions 2019*	Exemptions 2021	Exemptions 2022
Approved (one-time exemptions)	1,103	146	1,339
Refused	103	27	91
Infractions files sent to Transport Canada for follow-up	54	24	89

*Reference year

Soundscape Report 2022

YUL Movements – Restricted Hours

ONE-TIME EXEMPTIONS 2022 VS 2019



Summer 2022:

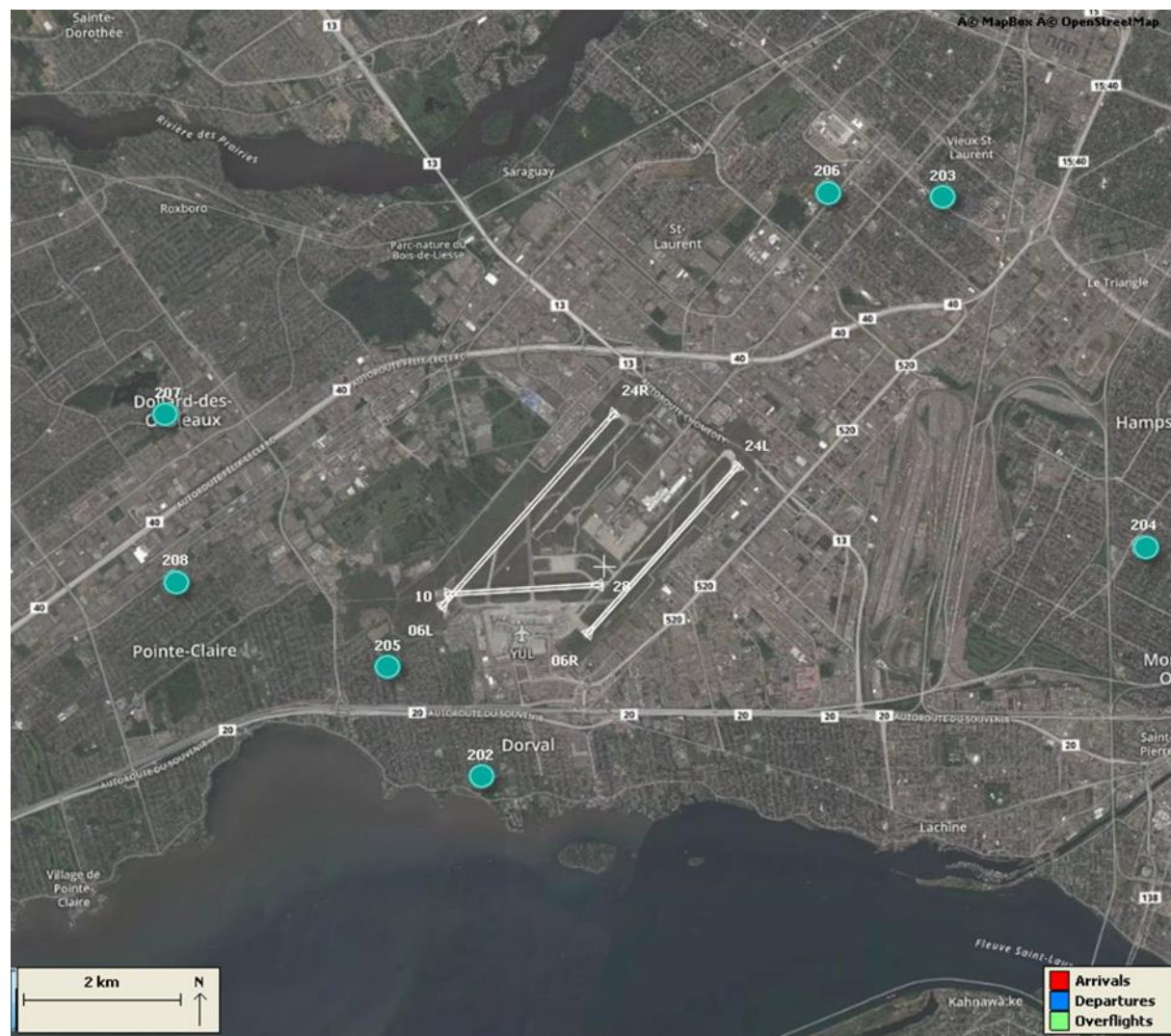
- Staff shortage and resumption of operations generating delays in airport operations
- Night of June 16 to 17, severe thunderstorms halted operations
- June 21 – baggage room shutdown
- July 5 – baggage room computer system failure affecting several airports

December 2022:

- Weather conditions during the holidays

Soundscape Report 2022

Noise Monitoring Terminals



Soundscape Report 2022

Annual Average Noise Levels Recorded at the Noise Monitoring Stations in 2022 (dB(A))

