

**North runway**  
(06L-24R)

**South runway**  
(06R-24L)

## SOUNDSCAPE STATISTICS – 2021

February 2022

# Soundscape Report 2021

## Highlights

- The total number of complaints increased by 17% compared to 2020 while the number of complainants decreased by 42%.
- The number of complaints linked to an air movement from an airport other than YUL or YMX increased by 16%.

### YUL:

- The number of air movements at YUL increased by 1% compared to 2020 while the number of complaints increased by 18%.
- Despite the increase in the number of complaints, the number of complainants decreased by 46%. For the year 2021, 85% of the complaints, or 25,190 complaints, were filed by 2 people.
- In 2021, the south runway was mainly used. This runway's flight path overflies south St-Laurent, Town of Mount-Royal, Villeray-St-Michel-Parc-Extension and Rosemont-La-Petite-Patrie.

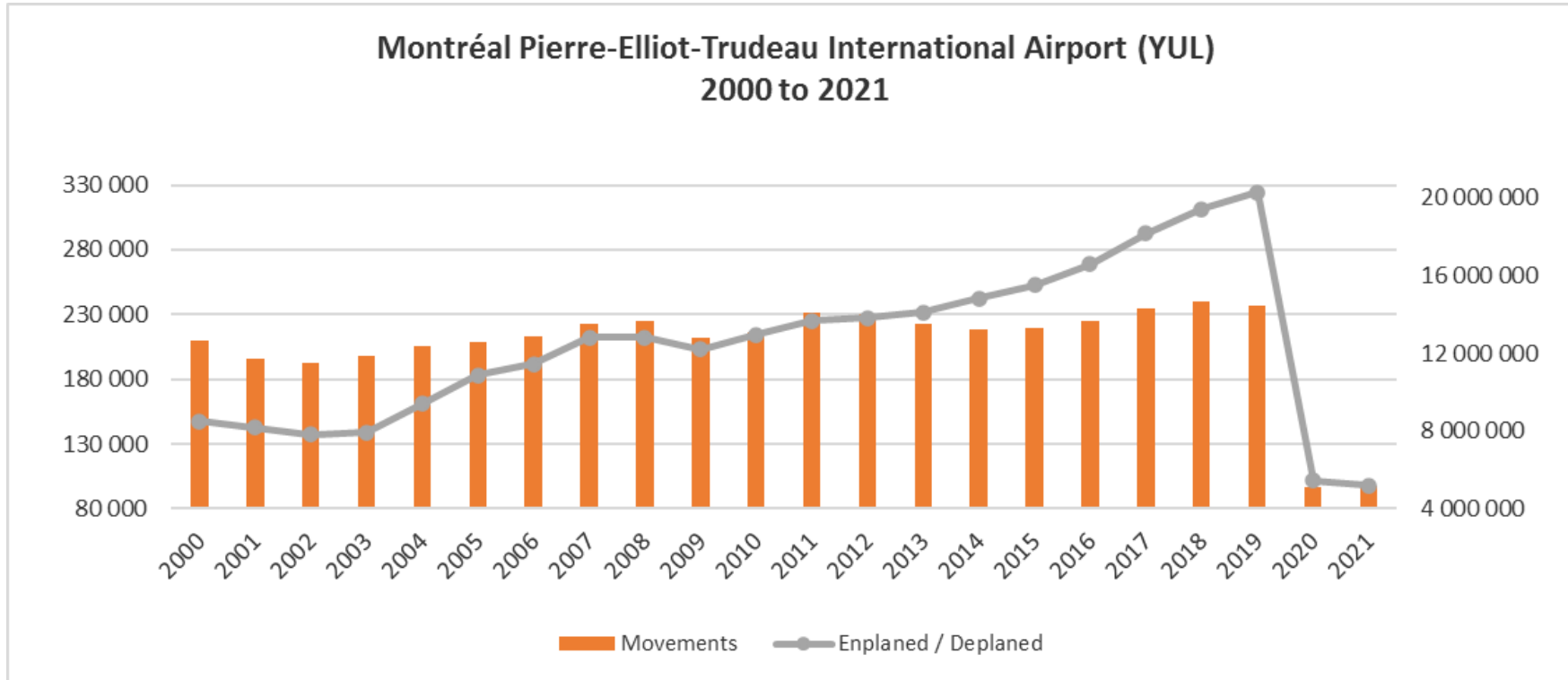
# Soundscape Report 2021

## Actions

- October 2021 – New « button » feature to submit complaints in one click with a cellphone.
- October 2021 – Following complaints linked to leisure flights, ADM sent a letter to Transport Canada and NAV Canada to report the disturbance caused by planes flying the Ville-Marie circuit over Montréal.
- May 2021 – ADM communicated with the Airport General Manager of Saint-Hubert airport following complaints linked to the Boeing 737-200 night flights that take off from this airport and sometimes overfly densely populated areas of Montreal.
- Short-term runway closures information (a few hours) are posted on WebTrak.

# Soundscape Report 2021

## Movements YUL



# Soundscape Report 2021

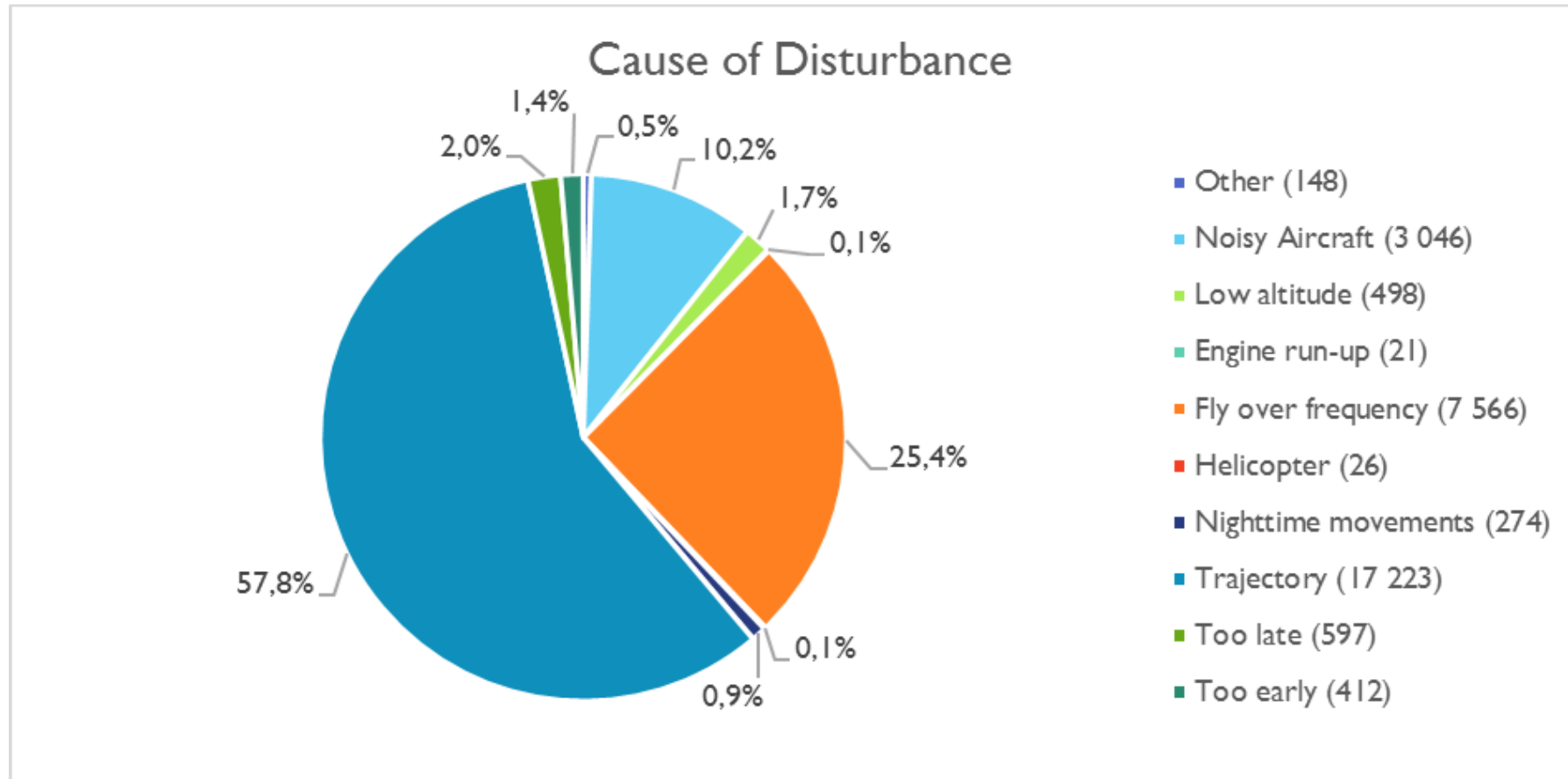
## Overview (2019-2020-2021)

	2019	2020	2021
Complaints – Total	50,709	25,955	30,464
Complainants – Total	979	425	247
Complaints – YUL	48,273	25,259	<b>29,811</b>
Complainants – YUL	934	362	<b>195</b>
Complaints – YMX	82	88	56
Complainants – YMX	30	36	10
Complaints – Other airports	763	392	456
Complaints not linked to a flight *	1,591	216	48
Number of movements – YUL	235,988	96,359	<b>97,766</b>
Ad-hoc exemptions – YUL	1,086	375	<b>146</b>

\* Complaints that the ANOMS system could not link to a flight – government flights as well as military or police operations are not accessible in this system for security reasons.

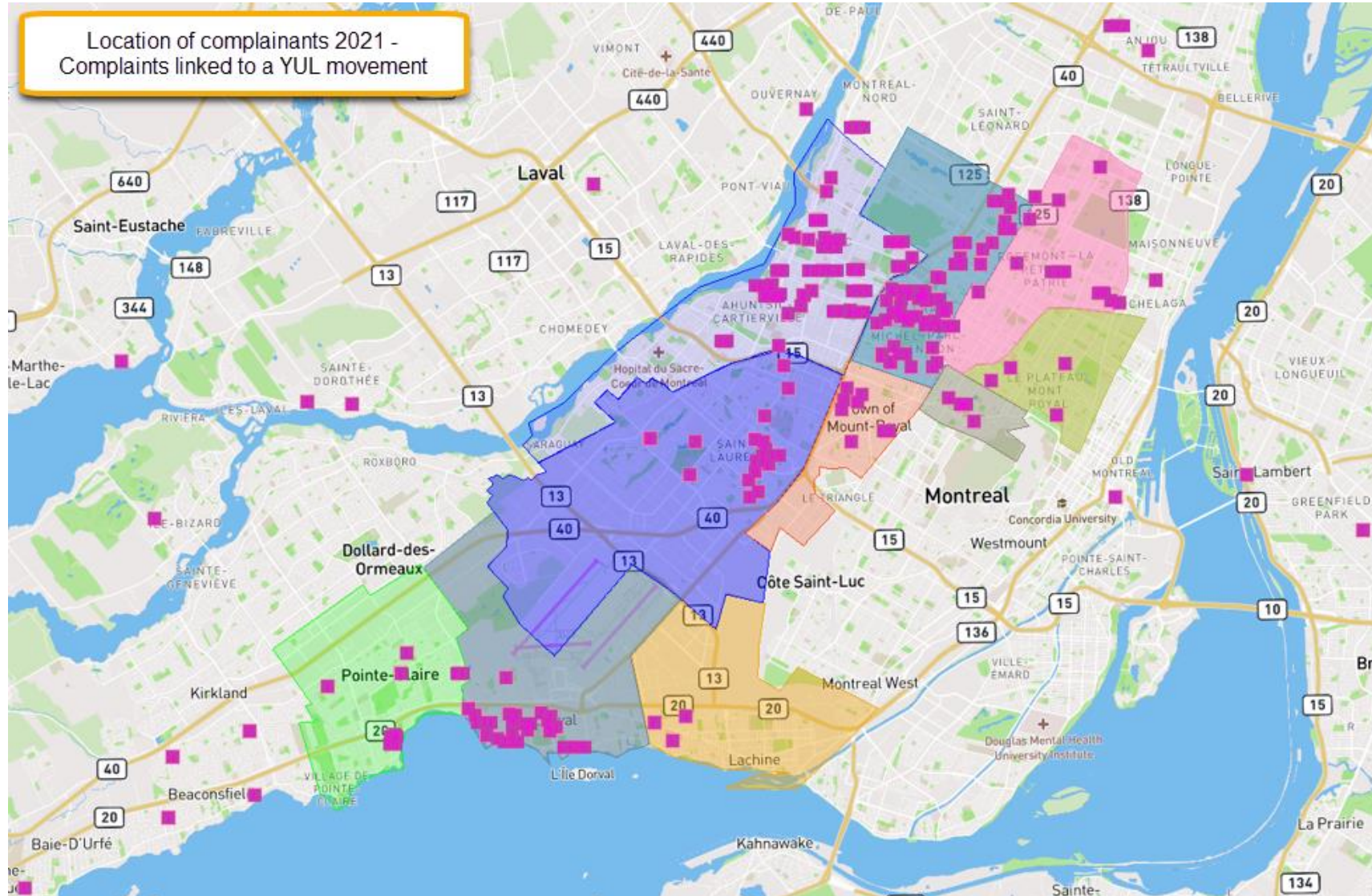
# Soundscape Report 2021

## Complaints – YUL Movements



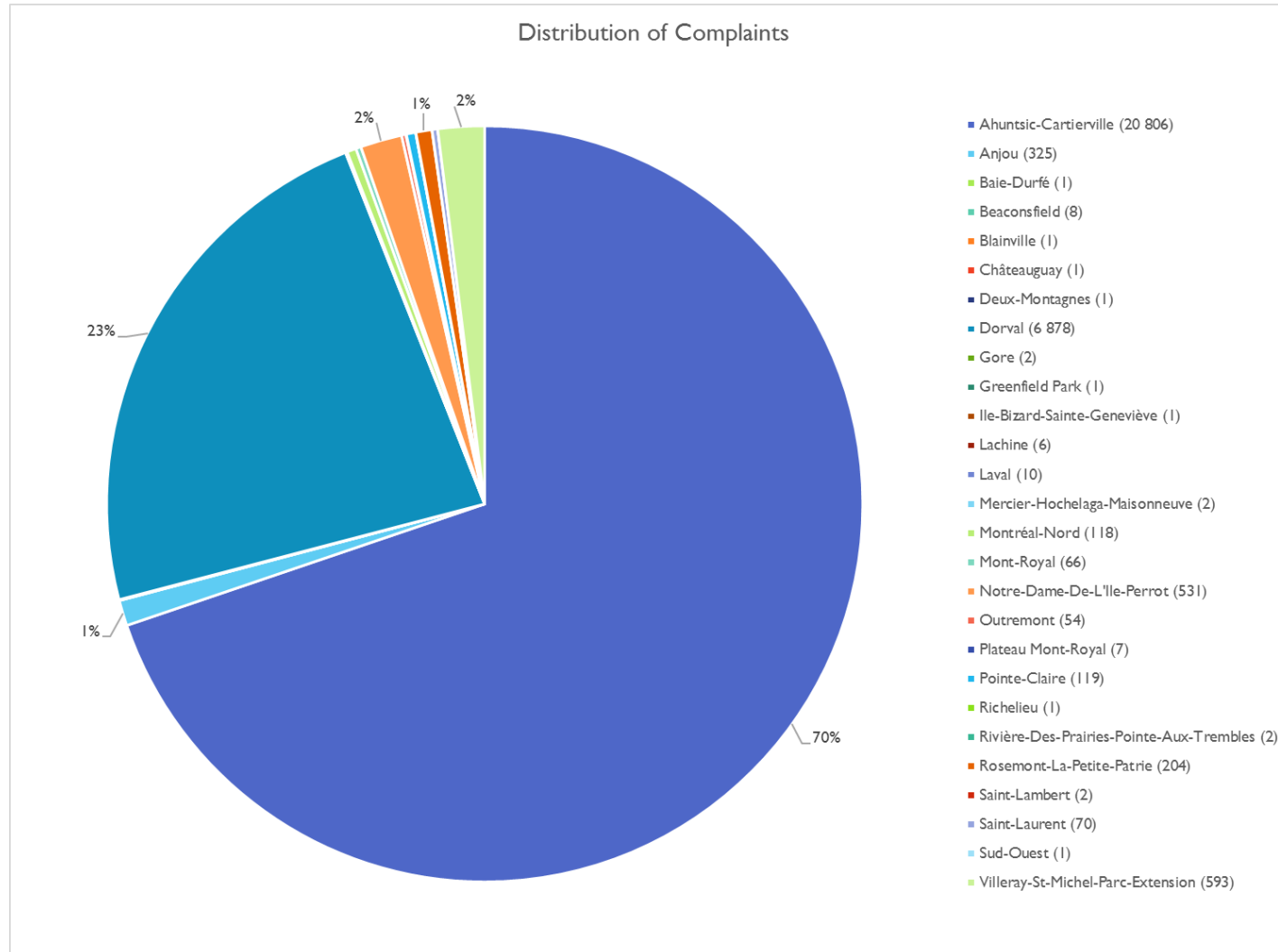
# Soundscape Report 2021

## Complaints – YUL Movements



# Soundscape Report 2021

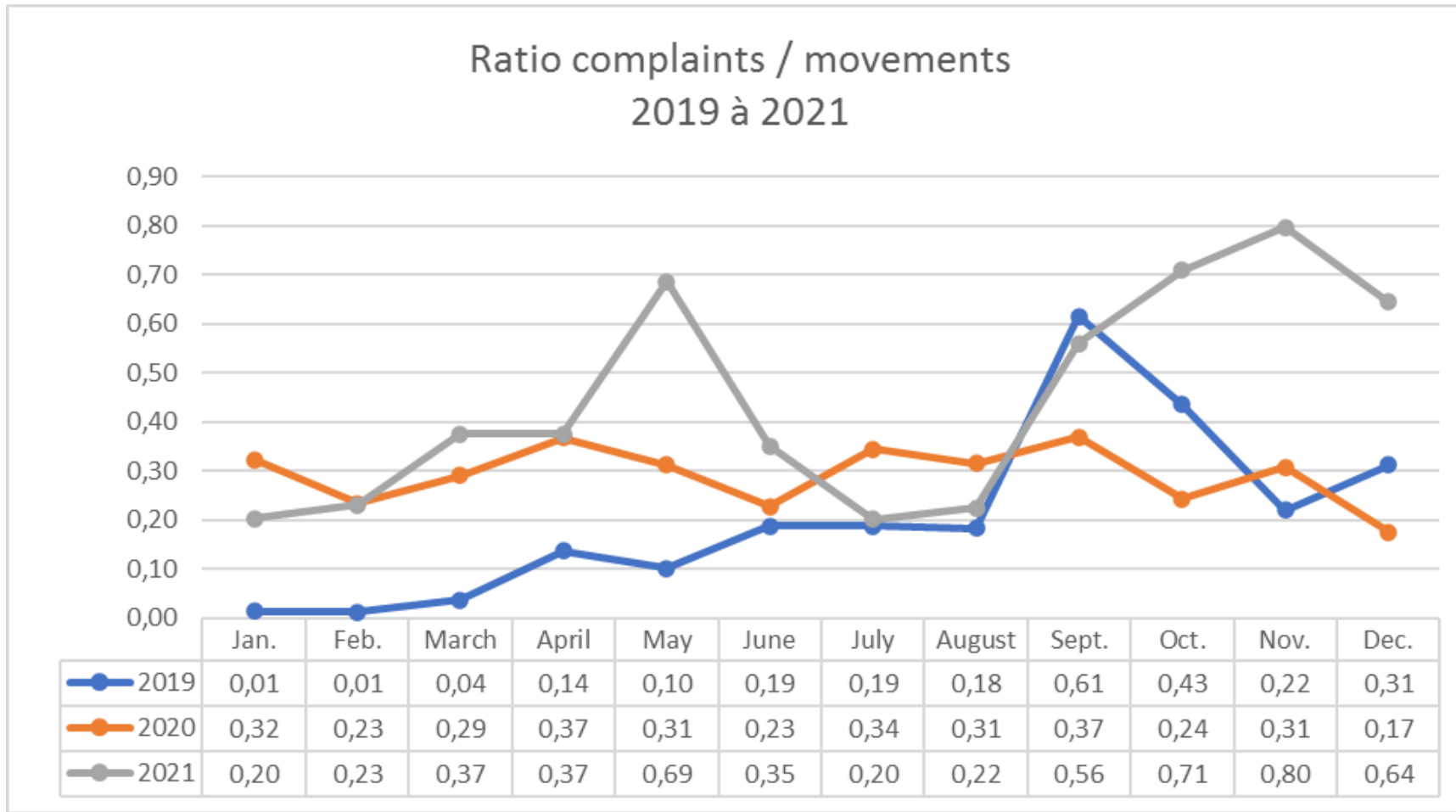
## Complaints – YUL Movements





# Soundscape Report 2021

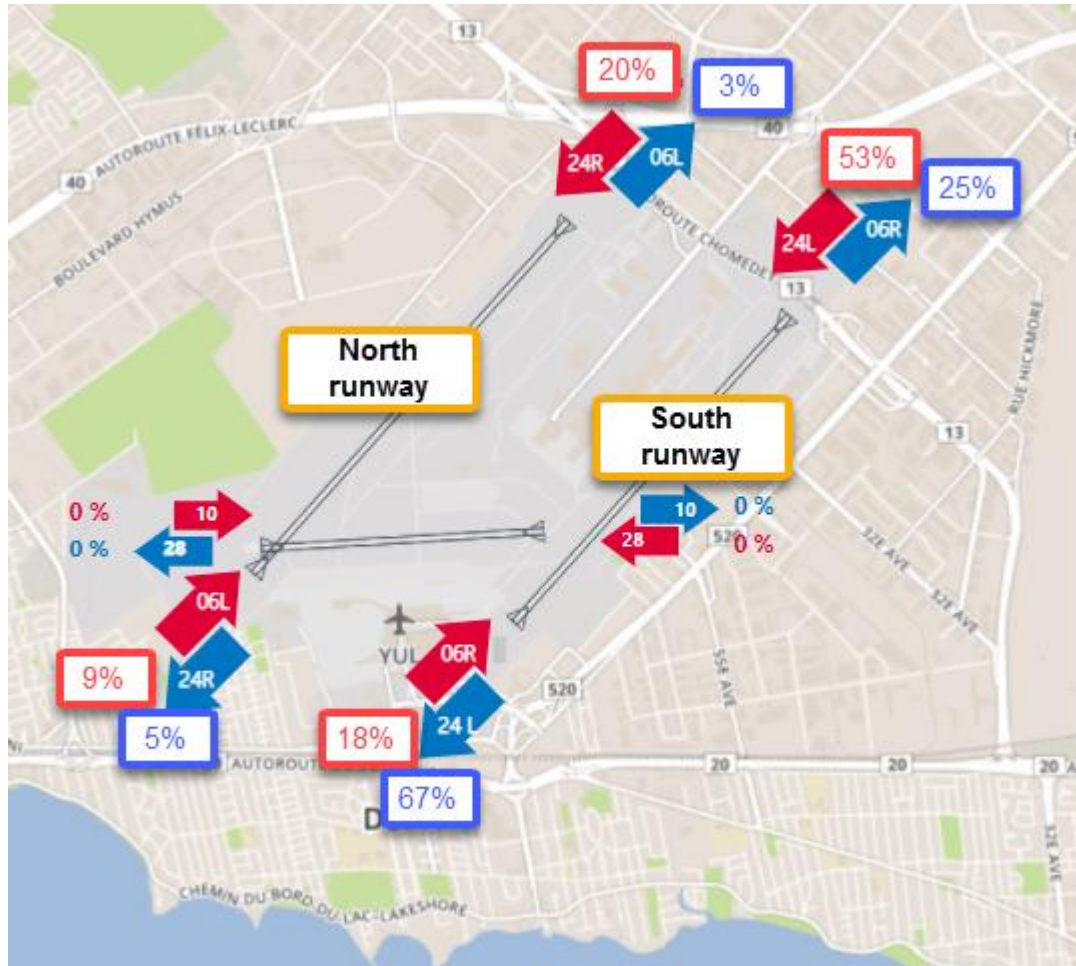
## Ratio complaints / movements YUL



Note: Since April 2020, ADM is no longer accepting complaints filed by email (including complaints submitted with AEROpainte). However, they are included in this graphic to show the level of disturbance despite the decrease of air movements compared to 2019.

# Soundscape Report 2021

## Distribution of air movements



### Distribution of complaints by runway:

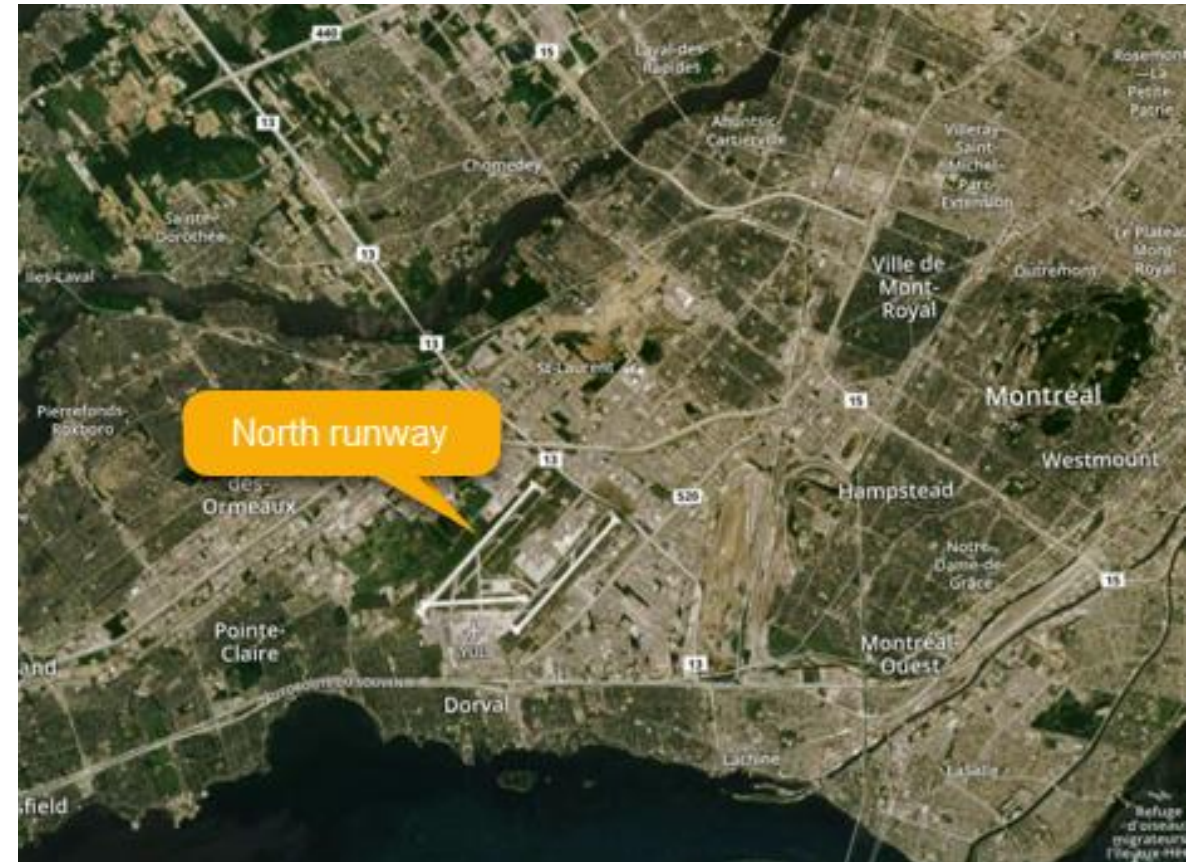
	% of total of complaints
<b>Departures southwesterly winds</b>	<b>24%</b>
South runway (24L)	23%
North runway (24R)	1%
<b>Departures northeasterly winds</b>	<b>22%</b>
South runway (06R)	18%
North runway (06L)	4%
<b>Arrivals southwesterly winds</b>	<b>53%</b>
South runway (24L)	8%
North runway (24R)	45%
<b>Arrivals northeasterly winds</b>	<b>3%</b>
South runway (06R)	2%
North runway (06L)	1%

# Soundscape Report 2021

## Runway closures - YUL

**North runway (06L-24R)** – Doval north, Pointe-Claire, Saint-Laurent north, Ahuntsic-Cartierville:

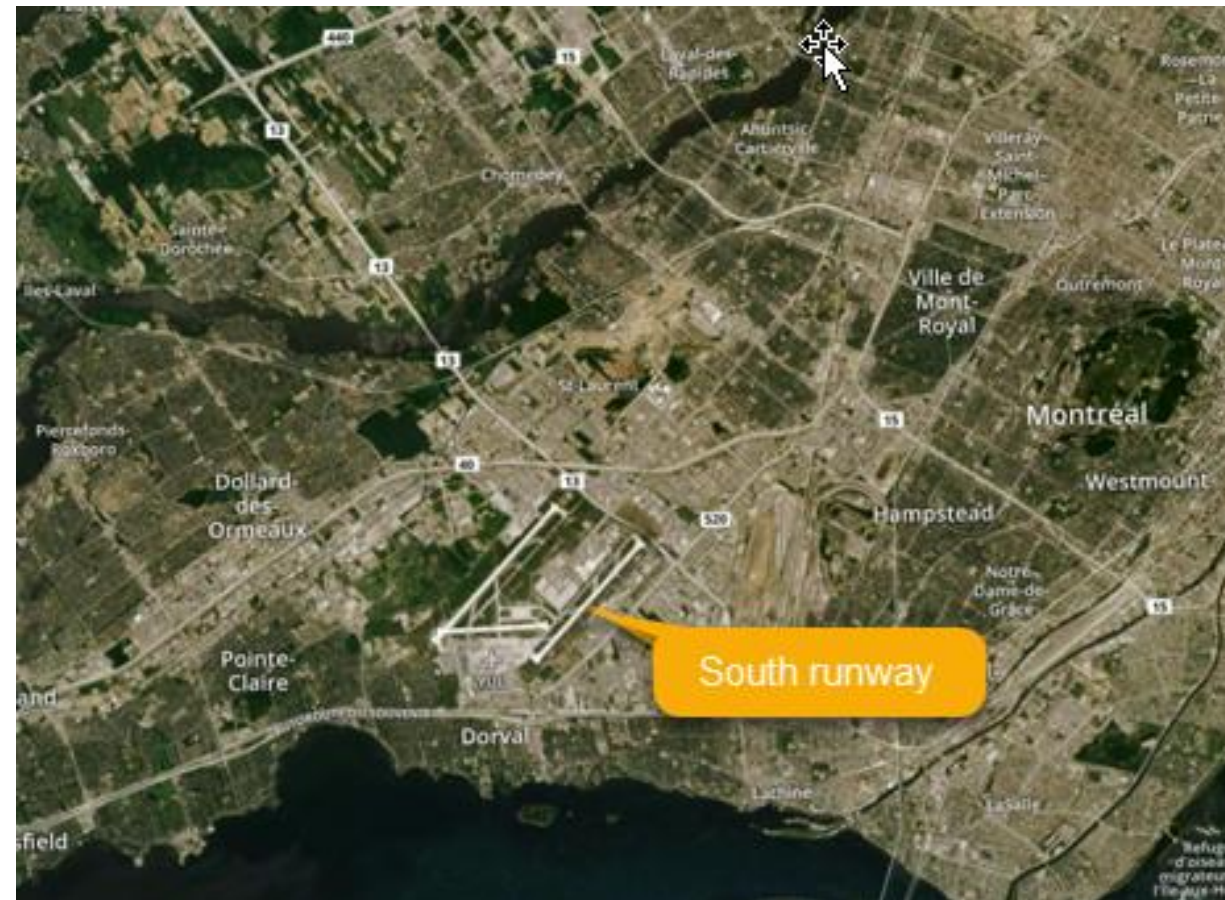
- January to April 23 – operational
- **From April 23 to May 17 – closed**
- From May 17 to June 2 – operational (single runway)
- **From June 2 to August 20 – closed**
- From August 20 to November 24 – operational in peak periods to ensure fluidity of operations
- As of November 24 – operational at all times for the winter season



# Soundscape Report 2021

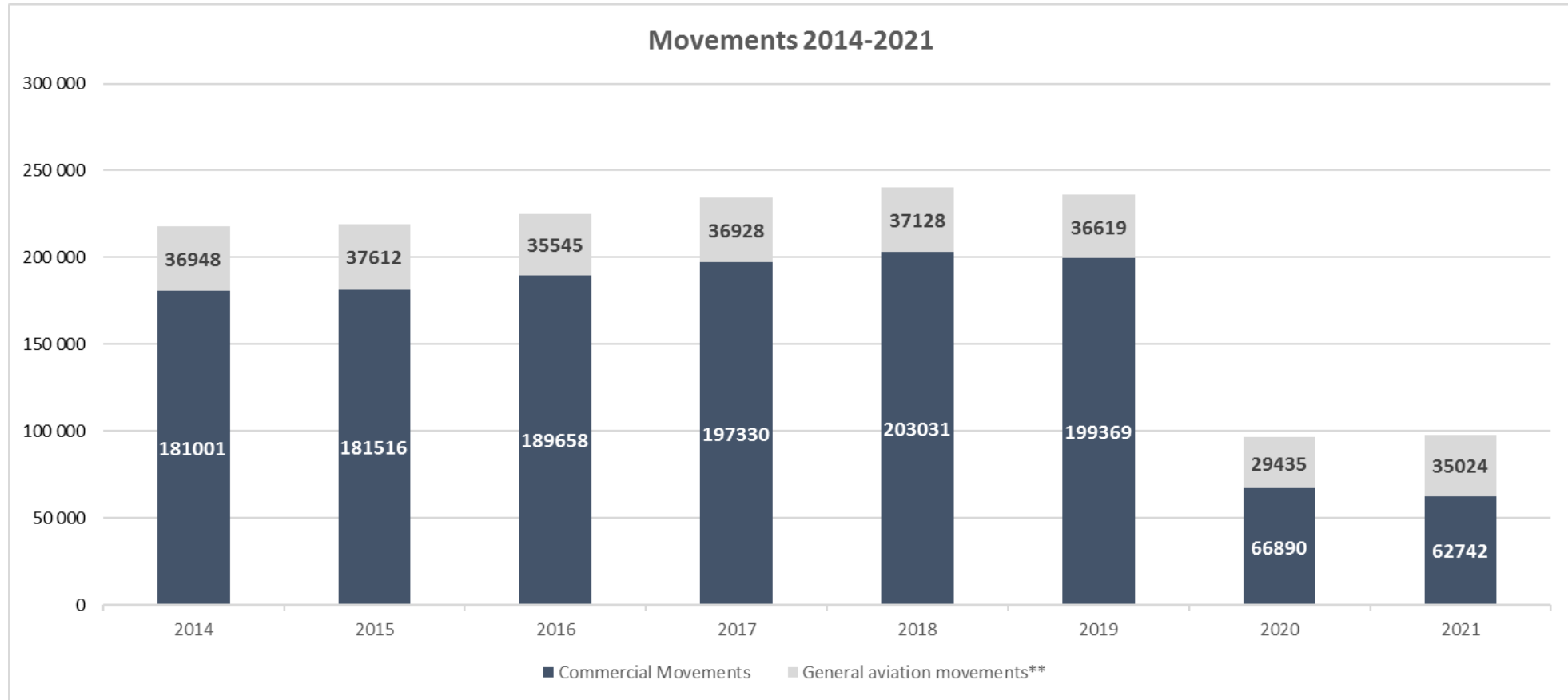
## Runway closures - YUL

- **South runway (06R-24L)** – Dorval south, Saint-Laurent south, Town of Mount-Royal, Villeray-St-Michel-Parc-Extension, Rosemont-La-Petite-Patrie:
- From January to May 17 – operational (single runway from April 23 to May 17)
- **From May 17 to June 2 – closed**
- From June 2 to August 20 – operational (single runway)
- From August 20 to November 24 – both runways are operational, the north runway is used in peak periods only
- As of November 24 – both runways are operational at all times for the winter season



# Soundscape Report 2021

## Mouvements YUL

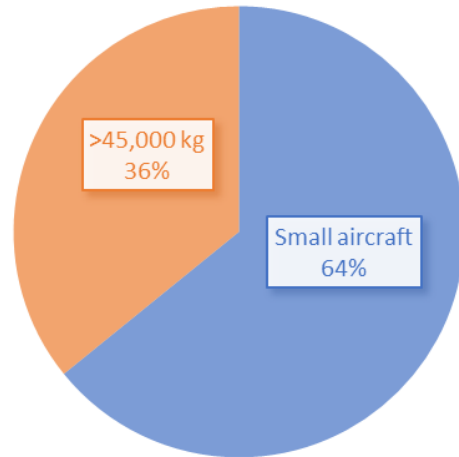


\*\* Représente all movements other than commercial at YUL

# Soundscape Report 2021

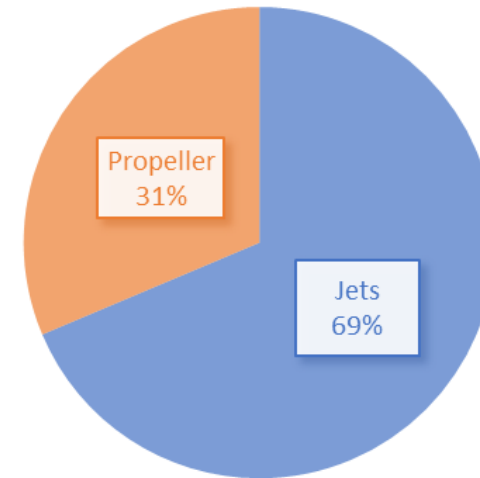
## Movements YUL

DISTRIBUTION OF AIR MOVEMENTS  
YEAR 2021, BY WEIGHT



Aircraft >45 000 kg: large planes (Airbus – Boeing)  
Small aircraft: less than 45,000 kg, small jets and propeller planes (Embraer, Dash-8)

DISTRIBUTION OF AIR MOVEMENTS  
YEAR 2021, BY AIRCRAFT TYPE



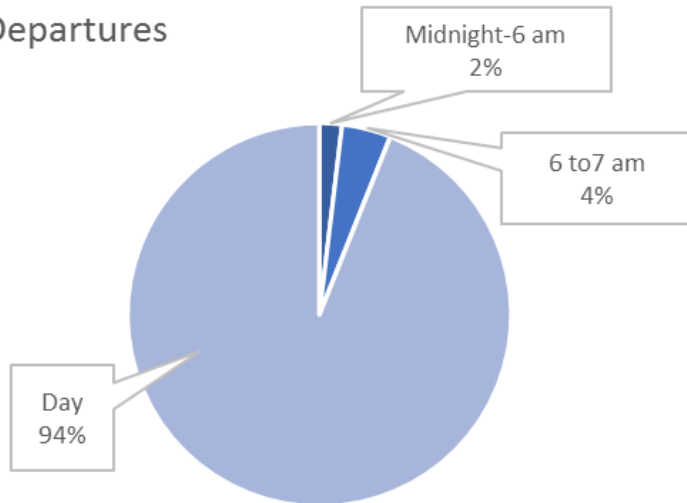
Jets – includes large planes (Airbus, Boeing) and small jets (Embraer, CRJ)  
Propeller – all turboprop and propeller aircraft (Dash-8, Beech)

# Soundscape Report 2021

## Movements YUL

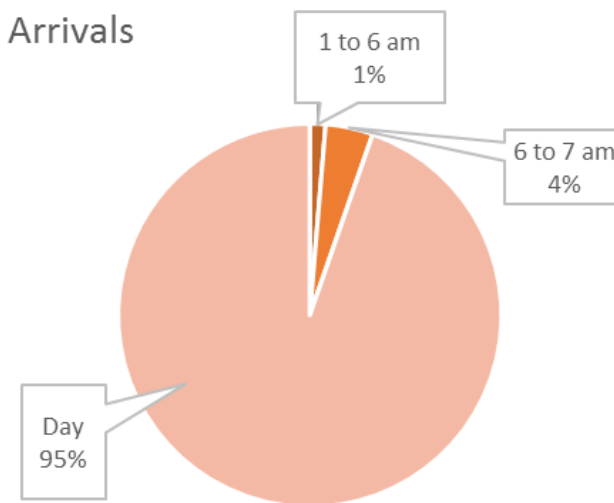
Distribution of movements 2021

Departures



Distribution of movements 2021

Arrivals



# Soundscape Report 2021

## Movements YUL – Restricted Hours

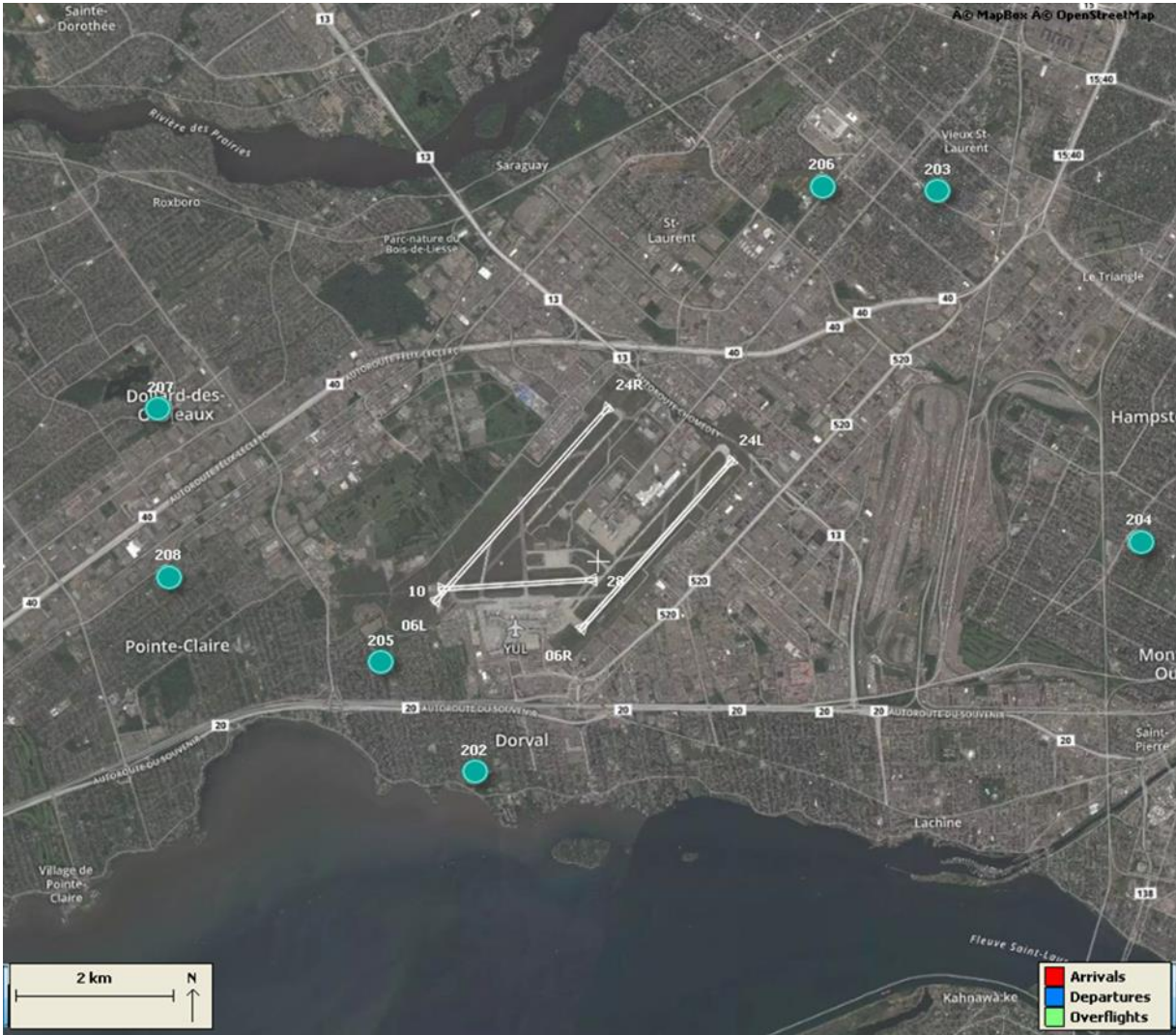
### Exemptions:

- 146 ad-hoc exemptions granted in 2021
- 27 exemption requests denied
- 24 infraction files transmitted to Transport Canada



# Soundscape Report 2021

## Noise Monitoring Terminals



# Soundscape Report 2021

