

Transit fares accepted aboard

All fares provide access to the 747, bus and métro systems (STM)

FARE PURCHASES IN ADVANCE



On L'Occasionnelle card or on OPUS' card



1-day • 24 hours	\$10 ⁰⁰
Unlimited Weekends From 4 p.m. Friday to 5 a.m. Monday	\$14 ⁰⁰
3-day • 3 consecutive days Until 11:59 p.m. the third day	\$19 ⁵⁰
Weekly Monday to Sunday on OPUS card ¹	\$26 ⁷⁵
Free • For children aged 5 and under	



- At the airport (international arrival level)
- In every métro station
- At the Infotouriste Centre
- At the tourist Welcome Office in Old Montréal (seasonal)

FARE PURCHASES ABOARD THE BUS



1-day • 24 hours \$10⁰⁰
Exact cash fare in coins



ALSO ACCEPTED ABOARD

- On OPUS card¹:
- Regular or reduced fare monthly pass
 - Reduced fare weekly pass
 - 4-month pass
 - Monthly Tram 1 to 8

747 Westbound trip purchased from the Stationnement de Montréal pay stations: to the airport, one-way only. Purchase ticket maximum 2 hours prior to bus departure.

¹ For more information concerning the OPUS card, please visit the stm.info/en/opuscard.

Hotels

Close to the bus stops

- STATION DE MÉTRO LIONEL-GROULX**
 - GUY / BISHOP**
Auberge Bishop
Auberge L'Apéro
Château Versailles
HI-Montreal hostel
Holiday Inn Hotel & Suites Montreal Centre-ville Ouest
Hotel Espresso Montreal Downtown
Le Nouvel Hôtel & Spa
 - DRUMMOND / DE LA MONTAGNE**
Auberge YWCA
Best Western Plus Montreal Downtown Hotel Europa
Comfort Suites Downtown
Four Seasons Hotel Montreal
Hôtel Le Crystal
Hotel Y Montreal
Le Centre Sheraton Montreal Hotel
Le Mount Stephen
Loews Hotel Vogue
Novotel Montreal Centre
Ritz-Carlton Montreal
 - PEEL**
Best Western Ville-Marie Hotel & Suites
Hotel Le Cantlie Suites
Hotel Omni Mont-Royal
Marriott Residence Inn Montreal Downtown
Montreal Marriott Chateau Champlain
Sofitel Montreal Golden Mile
 - MANSFIELD**
Hotel Bonaventure Montreal
Fairmont The Queen Elizabeth
Le Germain Hotel Montreal
Le St-Martin Hôtel Particulier
 - UNION / PLACE DU FRÈRE-ANDRÉ**
Delta Montreal
Hotel Birks Montréal
Hotel Gault
L'Appartement Hôtel
Le Square Phillips Hôtel & Suites
Renaissance Montreal Hotel Downtown
St Paul Hotel
W Montreal
 - JEANNE-MANCE**
AC Hotel Marriott Montréal Downtown
Courtyard Marriott Montreal Centre-Ville
Doubletree by Hilton Montréal
Embassy Suites by Hilton Montreal
Hilton Garden Inn Montreal Downtown
Holiday Inn Montreal Downtown
Hotel Le St-James
Hôtel Monville
InterContinental Montreal
Le Dauphin Downtown Montreal
Le Saint-Sulpice Hotel Montreal
Le Westin Montreal
LHotel Montreal
 - SAINT-LAURENT**
Auberge du Vieux-Port
- Hotel 10
Hotel des Arts
Hotel Zero 1
Place d'Armes Hotel & Suites
SpringHill Suites by Marriott
Old Montreal
Travelodge Montreal Centre
- DE L'HÔTEL-DE-VILLE**
Auberge Saint-Paul
Best Western Plus Hôtel Montréal
Candlewood Suites Montréal
Hôtel Chrome Montréal Centre-Ville
Hôtel Faubourg Montréal
 - STATION BERRI-UQAM**
Fairfield Inn & Suites by Marriott
Hôtels Gouverneur Montreal
Hôtel Le Roberval
Hôtel Le Saint-André
Hôtel Les Suites Labelle
Hôtel Lord Berri
Hôtel St-Denis
Hôtel Viger
M Montréal
SameSun Montréal Central
 - BERRI / ONTARIO**
Auberge de Jeunesse Alexandrie
Boxotel
Gîte du Plateau Mont-Royal
Hôtel de l'Institut
Hôtel Élegant
Hôtel Quartier Latin
Lelux Hotel



Métro



Planibus

Effective as of January 6 and subject to change before March 22, 2020

FREE

747

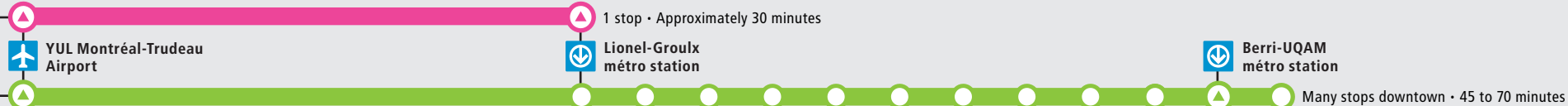
YUL MONTRÉAL-TRUDEAU AIRPORT/DOWNTOWN
24 hours / day • 7 days / week

2 ROUTES

(depending on schedule)

747 • Lionel-Groulx terminus route

747 • Berri-UQAM terminus route



To downtown

FROM MONDAY 5 A.M. TO SATURDAY 5 A.M.

A	B	C
YUL Montréal-Trudeau Airport 60997	Lionel-Groulx métro station 61332	René-Lévesque / Mansfield 52530
05 h 11 44	05 h 30	05 h 39
06 h 17 50	06 h 03 36	06 h 12 45
07 h 22 50	07 h 11 45	07 h 21 57
08 h 14 38	08 h 17 41	08 h 29 53
09 h 00 22 43	09 h 05 27 46	09 h 16 38 56
10 h 04 25 45	10 h 03 24 45	10 h 13 34 54
11 h 05 25 43 59	11 h 05 25 45	11 h 14 35 56
12 h 15 30 44* 55	12 h 03 19 35 50	12 h 14 30 46
13 h 05* 14 23* 32 41* 52	13 h 15 34 52	13 h 01 26 45
14 h 03 14* 24 33 42* 50 58*	14 h 12 23 44 53	14 h 03 23 34 55
15 h 07 16 26* 35 43* 50 57*	15 h 10 27 36 55	15 h 04 21 37 47
16 h 04 12* 20 27* 34 41* 47 54	16 h 13 27 43 57	16 h 08 26 40 56
17 h 00* 07 15* 22 29* 36 43* 49 55	17 h 10 17 30 45 59	17 h 10 23 30 43 58
18 h 01* 08 16* 24 31* 39 47 54*	18 h 12 18 31 47	18 h 11 25 31 42 58
19 h 02 10 18 26 34 42 50 58	19 h 02 10 25 30 38 46 54	19 h 13 21 36 41 49 57
20 h 06 14 22 30 39 48 57	20 h 02 10 18 26 34 42 50 59	20 h 05 13 21 29 37 45 53
21 h 06 15 25 35 45 55	21 h 08 17 26 35 45 55	21 h 01 09 18 27 36 45 55
22 h 05 16 31 46	22 h 05 15 25 36 51	22 h 05 15 25 35 46
23 h 01 16 31 50	23 h 06 21 36 51	23 h 01 16 31 46
00 h 12 48	00 h 10 32	00 h 01 20 42
01 h 34	01 h 08 54	01 h 18
02 h 26	02 h 46	02 h 04 56
03 h 23	03 h 43	03 h 53
04 h 25	04 h 45	04 h 55

FROM SATURDAY 5 A.M. TO MONDAY 5 A.M.

A	B	C
YUL Montréal-Trudeau Airport 60997	Lionel-Groulx métro station 61332	René-Lévesque / Mansfield 52530
05 h 20 50	05 h 40	05 h 46
06 h 20 50	06 h 10 40	06 h 16 46
07 h 20 50	07 h 10 40	07 h 16 47
08 h 20 50	08 h 11 41	08 h 19 49
09 h 20 49	09 h 11 41	09 h 19 49
10 h 14 38	10 h 10 35 59	10 h 18 43
11 h 00 20 40	11 h 21 41	11 h 07 29 49
12 h 00 16 29 41* 53	12 h 01 21 37 50	12 h 09 29 45 58
13 h 03* 11 19* 27 34* 42 49* 56	13 h 14 32 48	13 h 22 40 56
14 h 03* 10 17* 24 31 37* 43 49 55*	14 h 03 17 31 45 52	14 h 11 25 39 53
15 h 03 11* 19 26* 34 41* 48 55*	15 h 04 10 24 40 55	15 h 00 12 18 32 48
16 h 02 09* 16 24* 32 40 48* 55	16 h 09 23 37 53	16 h 03 17 31 45
17 h 02 09* 16 23 30* 36 42 47* 53 58	17 h 01 16 23 37 44 57	17 h 01 09 24 31 45 52
18 h 03* 08 13 19* 26 33* 40 47 55*	18 h 03 14 19 29 34 47	18 h 05 11 22 27 37 42 55
19 h 03 11 18 25 32 39 46 53	19 h 01 08 24 32 39 46 53	19 h 09 16 32 40 47 54
20 h 01 08 15 22 29 36 43 50 58	20 h 00 07 14 22 29 36 43 50 57	20 h 01 08 15 22 30 37 44 51 58
21 h 07 16 25 35 45 55	21 h 04 11 19 28 37 46 56	21 h 05 12 19 27 36 45 54
22 h 03 11 18 25 33 41 49	22 h 06 16 24 32 39 46 54	22 h 04 14 24 32 40 47 54
23 h 00 15 31 49	23 h 02 10 21 36 52	23 h 02 10 18 29 44
00 h 12 41	00 h 10 33	00 h 00 18 41
01 h 12 55	01 h 02 33	01 h 10 41
02 h 40	02 h 15	02 h 21
03 h 26	03 h 00 46	03 h 06 52
04 h 12	04 h 32	04 h 38

▼ This bus ends its run at Lionel-Groulx métro station.

♿ All buses on the 747 lines feature a ramp at the front.

To airport

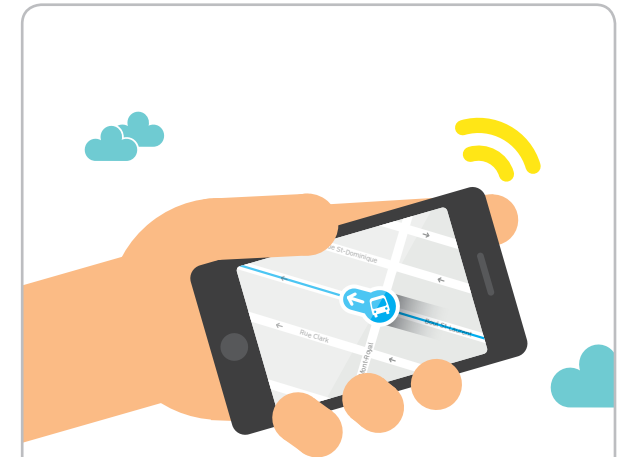
FROM MONDAY 5 A.M. TO SATURDAY 5 A.M.

D	E	F
Berri-UQAM métro station 52844	René-Lévesque / Mansfield 52529	Lionel-Groulx métro station 61334
04 h 54	04 h	04 h
05 h 27 58	05 h 01 34	05 h 11 44
06 h 11 25 40 55	06 h 05 20 34 49	06 h 00 15 30 44 59
07 h 11 29 47	07 h 04 20 38 56	07 h 14 30 49
08 h 05 23 41 59	08 h 14 32 50	08 h 07 25 42
09 h 16 33 49	09 h 08 25 42 58	09 h 00 18 35 52
10 h 02 13 24 35 46 57	10 h 11 22 33 44 55	10 h 08 21 32 43 54
11 h 08 18 28 38 48 58	11 h 06 17 27 37 47 57	11 h 05 16 27 37 47 57
12 h 08 18 28 38 58	12 h 07 17 27 37 47	12 h 07 17 27 37 47 57
13 h 16 34 51	13 h 07 25 43	13 h 07 17 28 37 46 55
14 h 00 09 24 31 38 53	14 h 00 09 18 33 40 47	14 h 04 12 21 30 38 45 52 59
15 h 07 14 21 35 42 55	15 h 02 17 24 31 45 52	15 h 06 14 22 29 36 43 50 57
16 h 09 23 38 54	16 h 05 19 33 48	16 h 04 10 17 24 31 39 46 54
17 h 13 28 42 58	17 h 04 23 38 52	17 h 01 08 17 27 35 42 49 56
18 h 16 31 49	18 h 08 25 39 57	18 h 03 10 19 28 36 43 50 58
19 h 18 38	19 h 25 45	19 h 08 20 36 56
20 h 05 35	20 h 12 42	20 h 23 53
21 h 05 35	21 h 12 42	21 h 23 53
22 h 05 35	22 h 12 42	22 h 23 51
23 h 05 36	23 h 12 43	23 h 21 52
00 h 08 41	00 h 15 48	00 h 24 57
01 h 18 59	01 h 25	01 h 34
02 h 43	02 h 06 50	02 h 15 59
03 h 32	03 h 39	03 h 48
04 h 24	04 h 31	04 h 40

FROM SATURDAY 5 A.M. TO MONDAY 5 A.M.

D	E	F
Berri-UQAM métro station 52844	René-Lévesque / Mansfield 52529	Lionel-Groulx métro station 61334
04 h 54	04 h	04 h
05 h 24 49	05 h 02 32 57	05 h 12 42
06 h 09 29 49	06 h 17 37 57	06 h 07 27 47
07 h 09 28 47	07 h 17 36 55	07 h 09 29 48
08 h 07 27 47	08 h 15 35 55	08 h 07 27 47
09 h 07 26 46	09 h 15 34 54	09 h 07 27 46
10 h 06 23 35 43 51 59	10 h 14 31 43 51 59	10 h 05 25 42 54
11 h 07 15 23 31 40 49 58	11 h 07 15 23 31 39 48 57	11 h 02 10 18 26 34 42 50 59
12 h 07 16 25 32 39 54	12 h 06 15 24 33 40 47	12 h 08 17 26 35 44 51 58
13 h 01 16 32 46	13 h 02 09 24 40 54	13 h 05 13 20 27 35 43 51 58
14 h 01 15 32 51	14 h 09 23 40 59	14 h 05 13 20 27 34 41 51
15 h 08 24 36 51	15 h 16 32 45	15 h 01 10 19 27 35 43 50 57
16 h 05 19 34 42	16 h 00 14 28 43 51	16 h 05 12 19 26 33 40 48 55
17 h 01 23 42 58	17 h 10 32 51	17 h 03 12 22 33 44 54
18 h 14 30 46 53	18 h 07 23 39 54	18 h 03 11 19 27 35 43 50 57
19 h 13 31 48	19 h 01 21 39 56	19 h 04 11 19 31 49
20 h 16 45	20 h 24 53	20 h 06 34
21 h 14 45	21 h 22 53	21 h 03 32
22 h 17 48	22 h 25 56	22 h 03 35
23 h 18 48	23 h 26 56	23 h 06 36
00 h 19 59	00 h 27	00 h 06 37
01 h 39	01 h 07 47	01 h 16 56
02 h 20	02 h 28	02 h 37
03 h 01 42	03 h 09 50	03 h 18 59
04 h 24	04 h 32	04 h 41

♿ All buses on the 747 lines feature a ramp at the front.



Before you leave, check real-time schedule

Planibus is a great tool for checking planned bus schedules.

But due to the many road construction projects, it's always a good idea to check your bus's schedule in real-time.

