



**SOUNDSCAPE ADVISORY COMMITTEE**

**MONTRÉAL-PIERRE ELLIOTT TRUDEAU  
INTERNATIONAL AIRPORT**

**SUMMARY**

**Meeting of April 10<sup>th</sup>, 2015**



Following is a summary of the meeting of the Soundscape Advisory Committee that was held on April 10<sup>th</sup>, 2015 at Aéroports de Montréal's Head Office.

Present :

- Christiane Beaulieu, Aéroports de Montréal
- Morris Trudeau, Mayor, City of Pointe-Claire
- Alan DeSousa, Mayor, Borough of Saint-Laurent
- Aref Salem, Responsible for Transportation, City of Montréal Executive Committee / Councillor, Borough of Saint-Laurent
- George Petsikas, Air Transat
- Mena Salib, Air Canada
- Giovanni Pipino, Execaire
- Richard Beaudet, Transport Canada
- Lyne Moreau, NAV Canada
- Anne Marcotte, Aéroports de Montréal

Guests :

- Bill Devlin, Air Canada
- Éric Bordeleau, Air Canada
- Luce Bureau, Aéroports de Montréal
- Christine Meloche, Aéroports de Montréal

Absent :

- Edgar Rouleau, Mayor, City of Dorval
- Philippe Serafino, American Airlines

Secretary :

- Anne-Marie Urban, Aéroports de Montréal



## **A. AIR CANADA PRESENTATION**

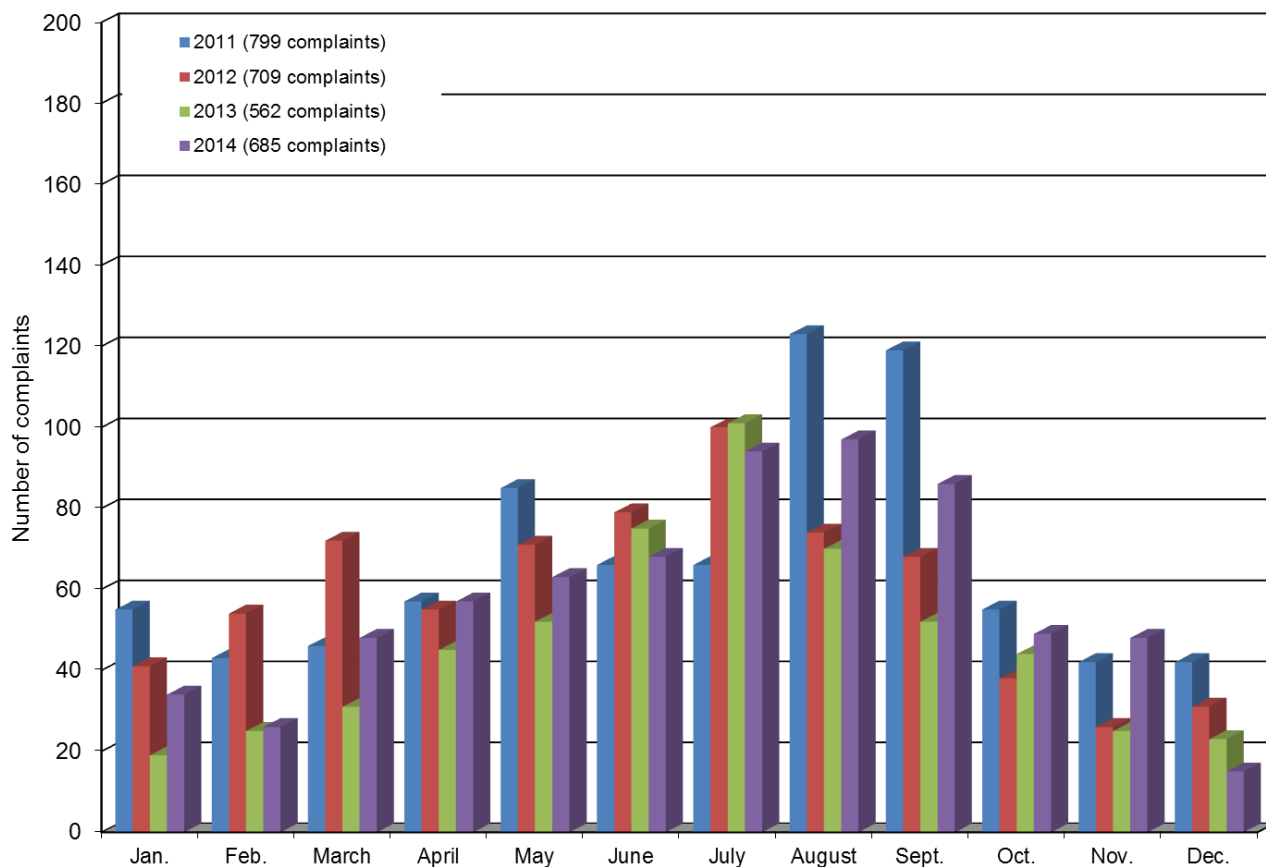
Bill Devlin, Senior Director, Airport Development & Charges, and Éric Bordeleau, General Manager, Schedule Planning – North America, attend the meeting to explain the key role of early-morning flights (departures between 6 a.m. and 7 a.m.) in Air Canada operations. There are 2 flights with approved schedules for departures between 6 a.m. and 7 a.m.

## **B. YEARLY INDICATORS 2014**

- 249 complainants filed 685 noise complaints in 2014
- Increase of 18% of complainants compared to 2013
- Increase of 21.8% of complaints compared to 2013
- 51% of the complaints were filed by 8 complainants.
  
- Runway 10-18 was closed from May 20<sup>th</sup> to October 20<sup>th</sup> because of construction on the apron and taxiways.
  
- This work modified runway assignments in Southwesterly wind conditions generating an increase of departures on runway 24R and of arrivals on runway 24L.
  
- Residents of Dorval north, Pointe-Claire south as well as Saint-Laurent south, the northern fringe of Ville Mont-Royal and Villeray were particularly affected by this situation.



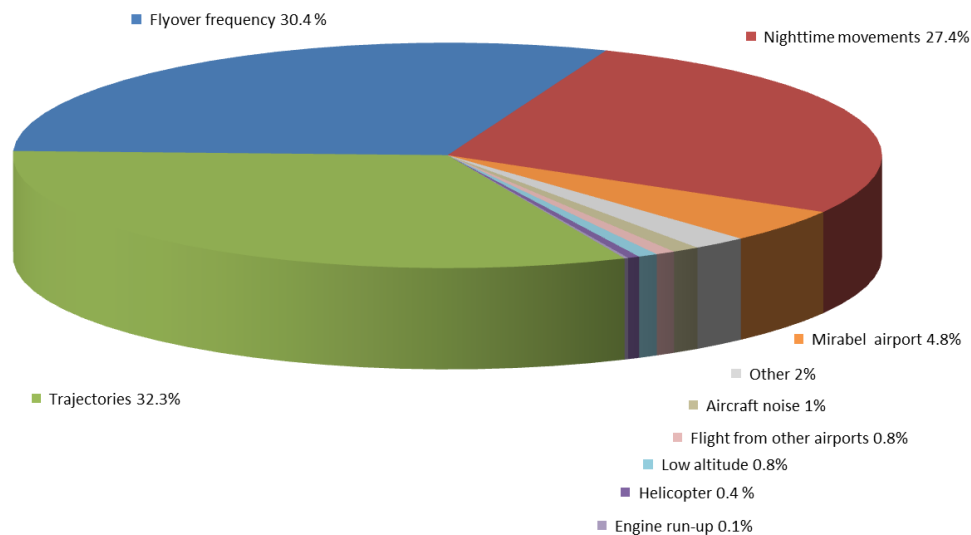
**NOISE COMPLAINT STATISTICS**  
**2014**





**MOTIVE OF COMPLAINTS - YEAR 2014**  
**AÉROPORT MONTRÉAL-TRUDEAU**

Motive of complaints 2014	Number of complaints
Trajectories	221
Flyover frequency	208
Nighttime movements	188
Mirabel airport	33
Others	14
Aircraft noise	7
Flight from other airport	5
Low altitude	5
Helicopter	3
Engine run-up	1
<b>Total</b>	<b>685</b>



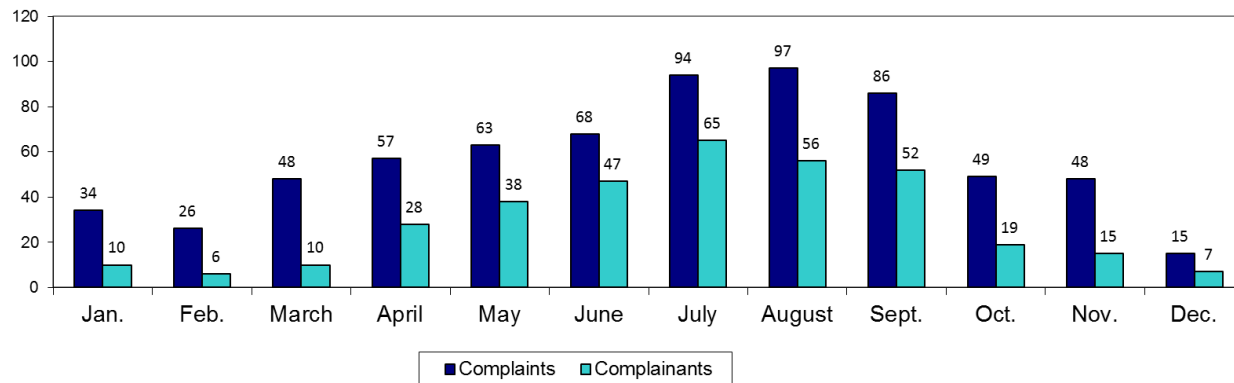
# MONTRÉAL-TRUDEAU

## LA GESTION DU CLIMAT SONORE

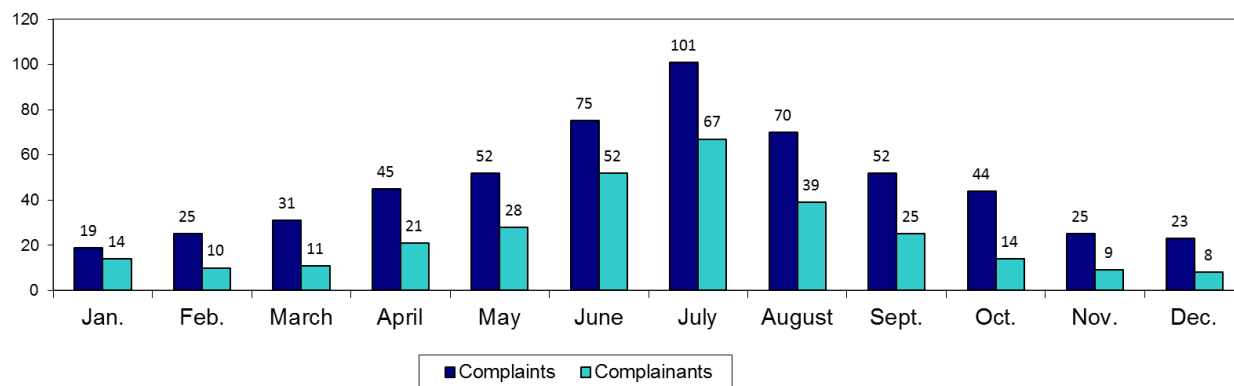
### SOUNDSCAPE MANAGEMENT



**EVOLUTION OF NUMBER OF COMPLAINTS AND OF COMPLAINANTS - 2014**



**EVOLUTION OF NUMBER OF COMPLAINTS AND OF COMPLAINANTS - 2013**



# MONTRÉAL-TRUDEAU

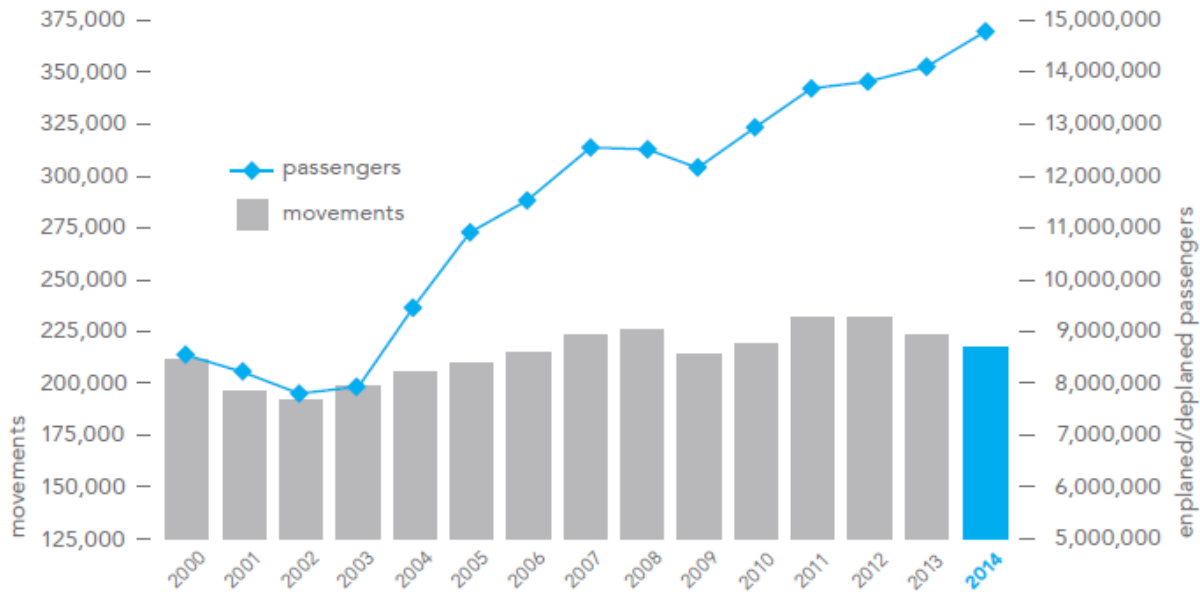
## LA GESTION DU CLIMAT SONORE SOUNDSCAPE MANAGEMENT



### Number of movements :

The number of movements (departures and arrivals) decreased by 2%, going from 220,224 in 2013 to 215,775 in 2014.

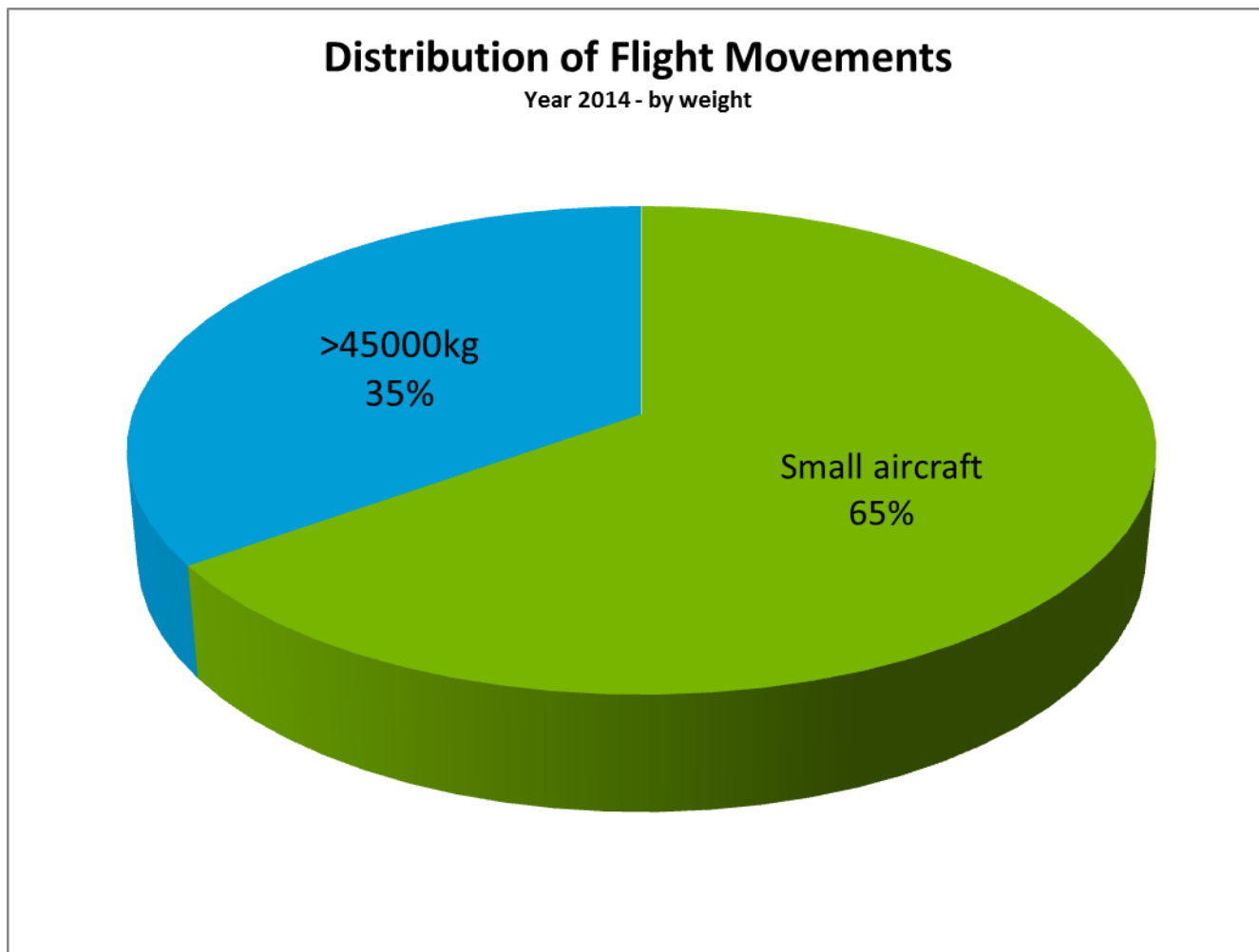
### AIR TRAFFIC DEVELOPMENT ACROSS 15 YEARS



**Note**  
As of 2007, passenger statistics include both paying and non-paying passengers to reflect the new data compilation method.



**Movements – Traffic today**



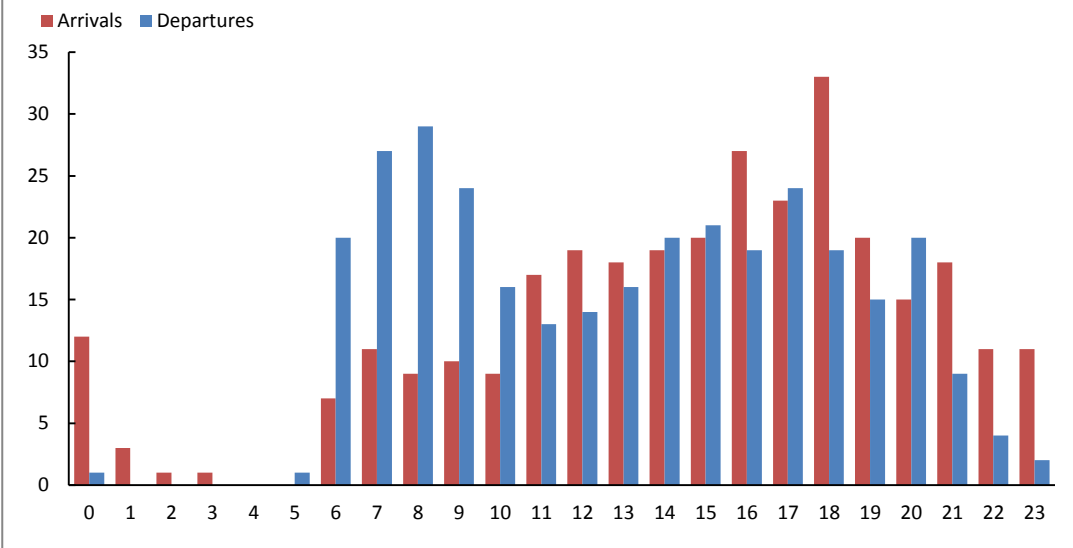
Aircraft +45 000 kg  
Aircraft -45 000 kg

Airbus – Boeing  
CRJ – Dash-8 – General Aviation

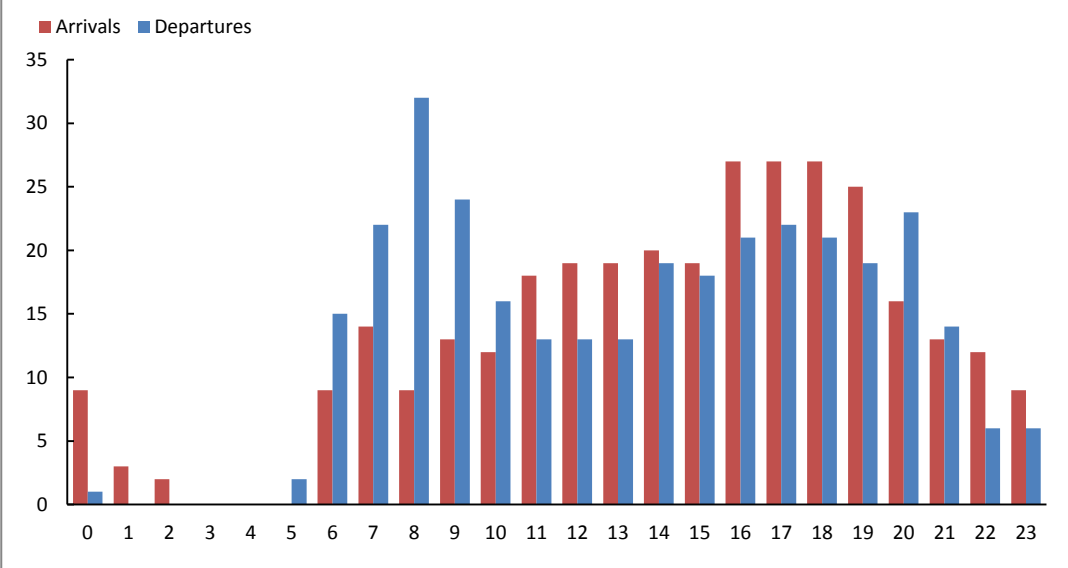




**Arrivals and Departures (hourly)**  
*Typical Winter Day 2014*



**Arrivals and Departures (hourly)**  
*Typical Summer Day 2014*





## Nighttime Movements

### Proportion of flights outside operating hours

Year	% of total departures 00:00 – 07:00	Year	% of total arrivals 01:00 – 07:00
2002	7%	2002	2%
2003	8%	2003	3%
2004	8%	2004	3%
2005	9%	2005	3%
2006	9%	2006	4%
2007	8%	2007	4%
2008	8%	2008	4%
2010	7%	2010	4%
2011	7%	2011	4%
2012	7%	2012	4%
2013	7%	2013	4%
2014	6%	2014	4%

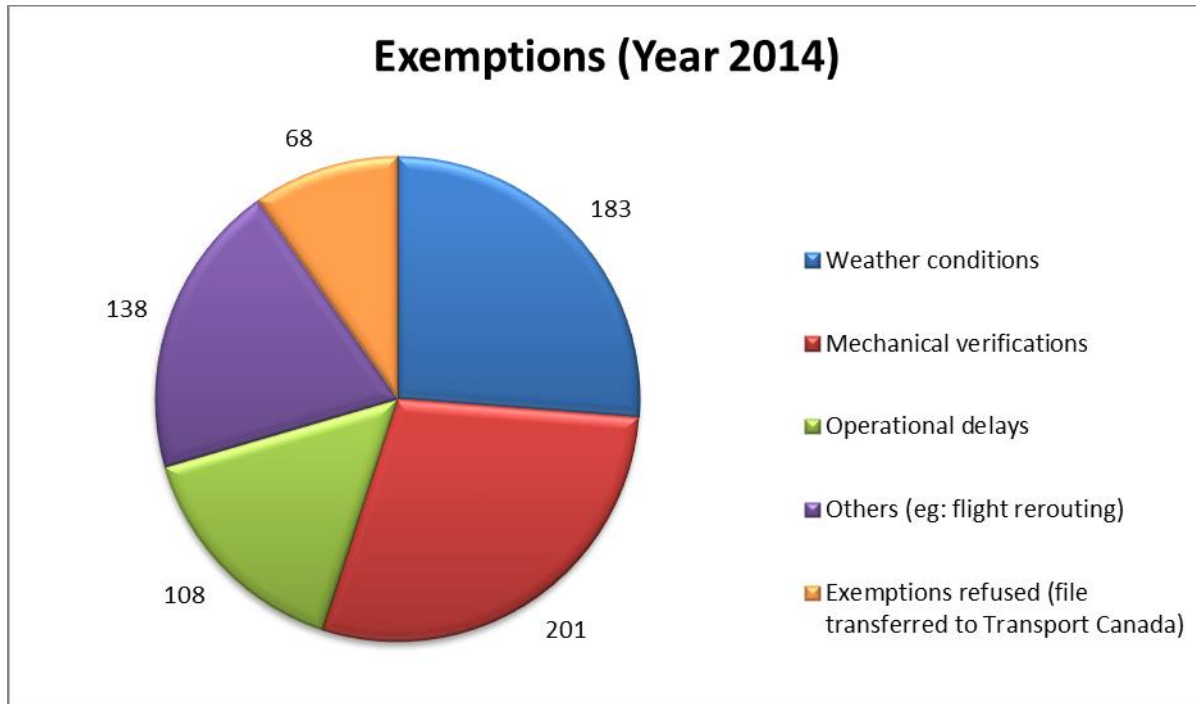
The proportion of flights outside operating hours has remained stable and is mainly comprised of aircraft of less than 45 000 kg.



**Exemptions :**

The summary of night flights for the year 2014 is presented to the Committee. 630 ad-hoc exemptions were granted for the year 2014. 68 infraction cases were transmitted to Transport Canada.

ADM continues to rigorously evaluate every request for exemption. It is noted that the restricted operation hours apply only to flights operated with an aircraft weighing more than 45 000 kg and that only these flights are required to submit an exemption request.

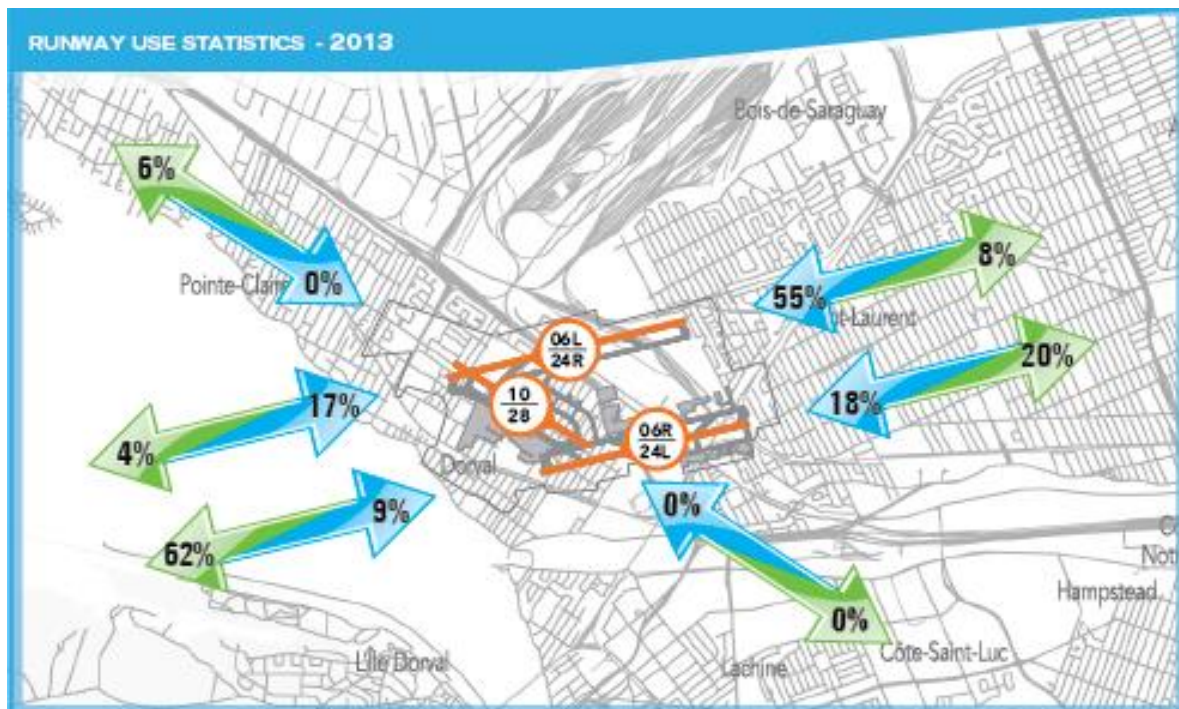
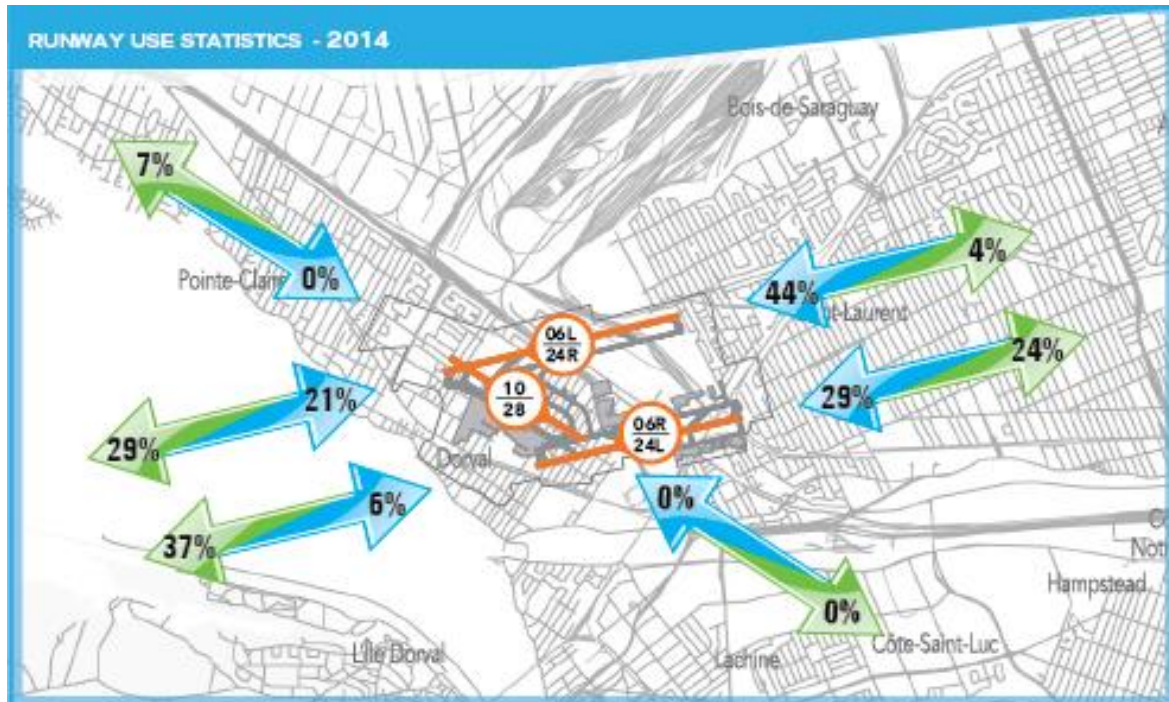


# MONTRÉAL-TRUDEAU

## LA GESTION DU CLIMAT SONORE SOUNDSCAPE MANAGEMENT



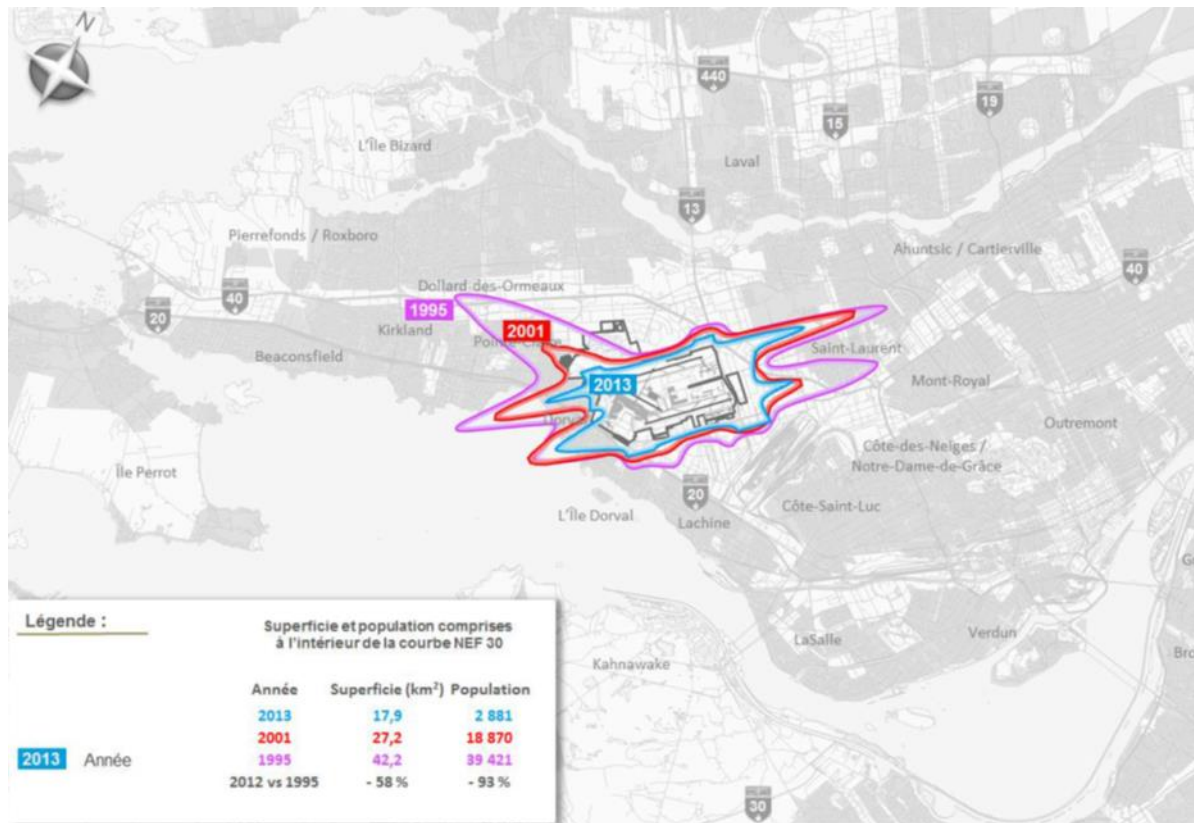
Runway use statistics – Year 2014 / Year 2013





### C. NEF 2013

The 2013 NEF that will be presented at Aéroports de Montréal's upcoming Annual Public Assembly on May 1<sup>st</sup> is presented to the Committee.



- The 2013 sound footprint of Montréal-Trudeau covered an area of 17.9 km<sup>2</sup>, a decrease of 58% compared to the 42.2 km<sup>2</sup> recorded in 1995.
- The number of people living under the noise footprint decreased by 93% since 1995, from 39,421 in 1995 to 2,881 in 2013.



#### D. $L_{eq}$ 2014

The  $L_{eq}$  2014 table – Average annual noise level recorded at the noise-monitoring stations is presented to the Committee.

<b>NMT</b>	<b>Description</b>	<b>Noise level Total (Leq)</b>	<b>Noise Level Aircraft (Leq)</b>
<b>2</b>	South Dorval	59	58
<b>3</b>	South Saint-Laurent	61	56
<b>4</b>	Côte-Saint-Luc	57	38
<b>5</b>	North Dorval	64	64
<b>6</b>	North Saint-Laurent	60	58
<b>7</b>	Dollard-des-Ormeaux	58	41
<b>8</b>	Pointe-Claire	54	42

The data is separated by aircraft noise or community noise (all other noise).

Average noise levels from aircraft movements measured in Dollard-des-Ormeaux, Côte-Saint-Luc and Pointe-Claire are significantly lower than the level of noise originating solely from the community.

For the noise-monitoring stations located in South Dorval and Saint-Laurent, the average noise levels of aircraft are similar to those of the community.

As the North Dorval station is very close to the runway (1 km), the noise levels from aircraft are higher.



## **E. CONSTRUCTION WORK – SUMMER 2015**

The work scheduled for the summer of 2015 is presented to the Committee. The work will be done in 3 stages:

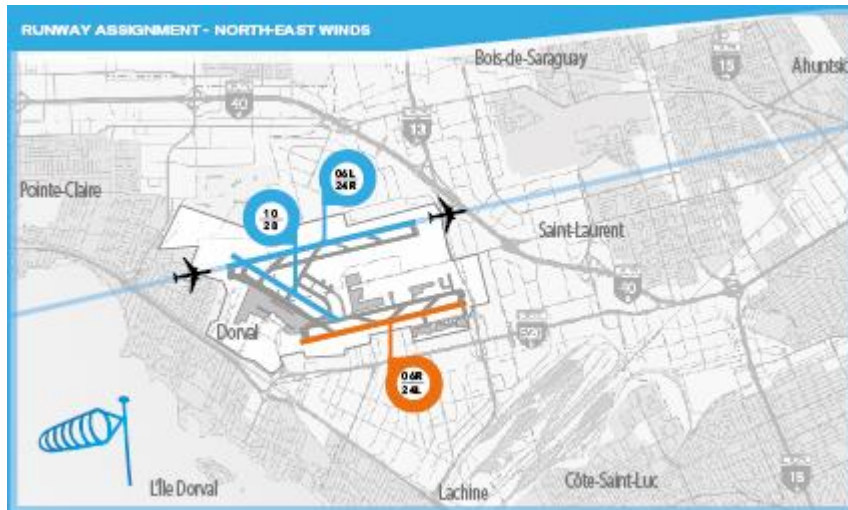
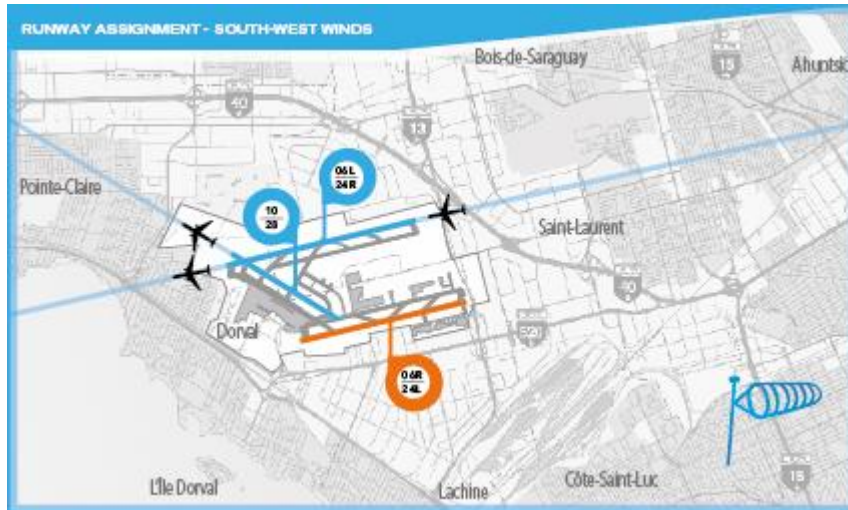
- 1. Closure of 06R-24L – April 13 to 24**  
(inspection, sealing of joints and replacement of concrete slabs)



# MONTRÉAL-TRUDEAU LA GESTION DU CLIMAT SONORE SOUNDSCAPE MANAGEMENT



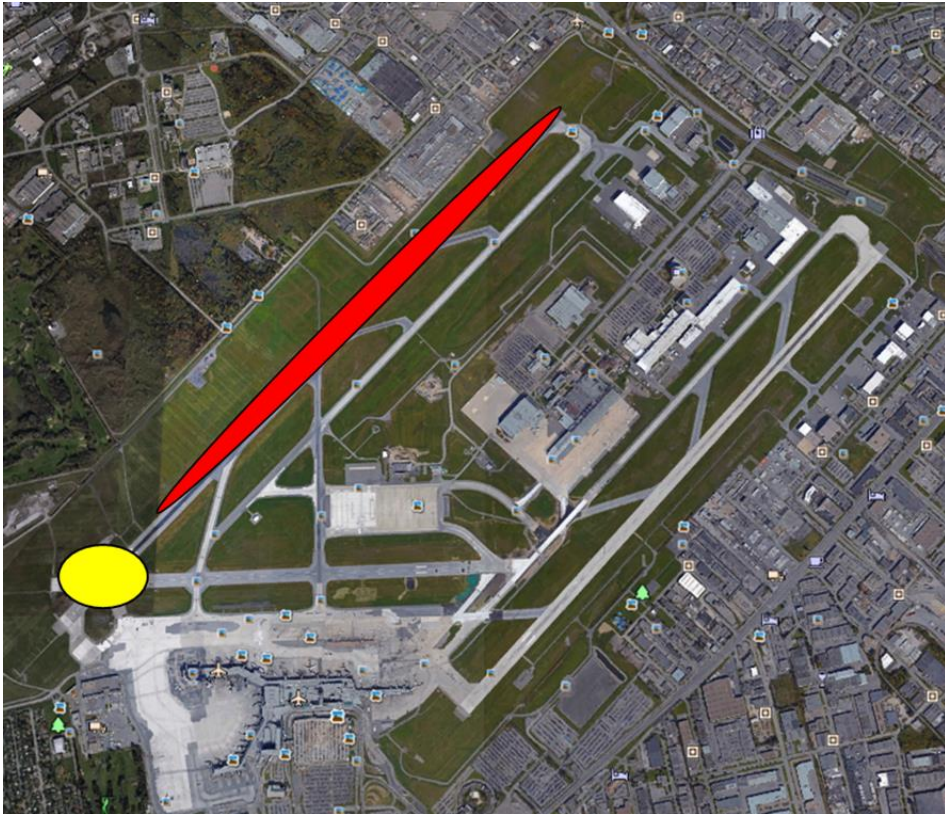
Runway assignment :



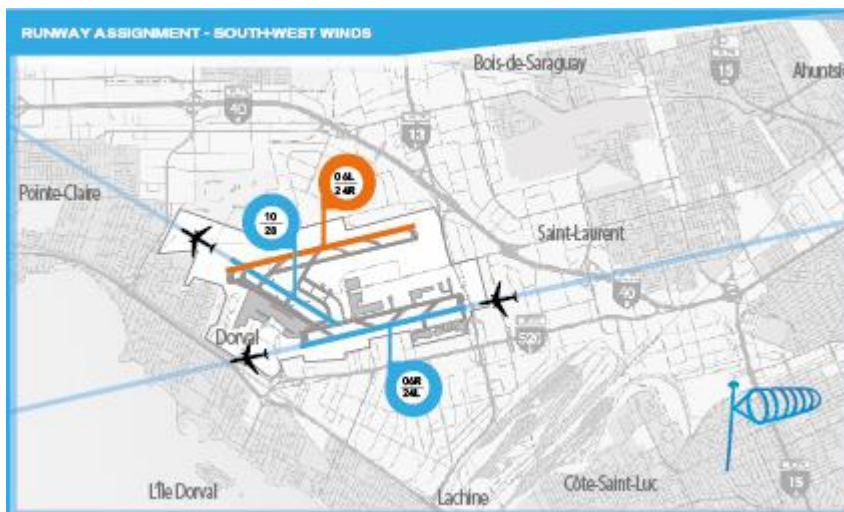




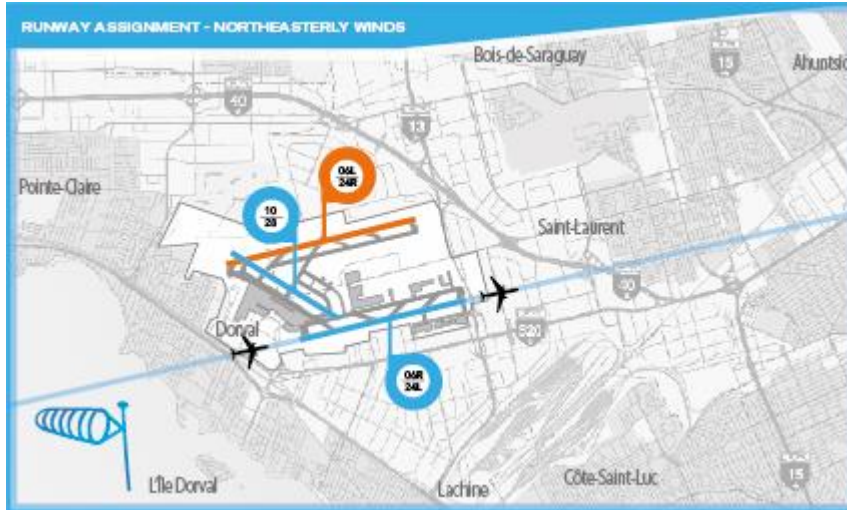
2. **Closure of 06L-24R from May 4 to 22**  
(sealing of fissures, rubber removal and replacement of electrical equipment)



Runway assignment:



# MONTRÉAL-TRUDEAU LA GESTION DU CLIMAT SONORE SOUNDSCAPE MANAGEMENT



3. **Work on east apron and de-icing Centre – late May to early October**  
(Repairs to the east apron and work at the de-icing centre to maximize glycol recovery)

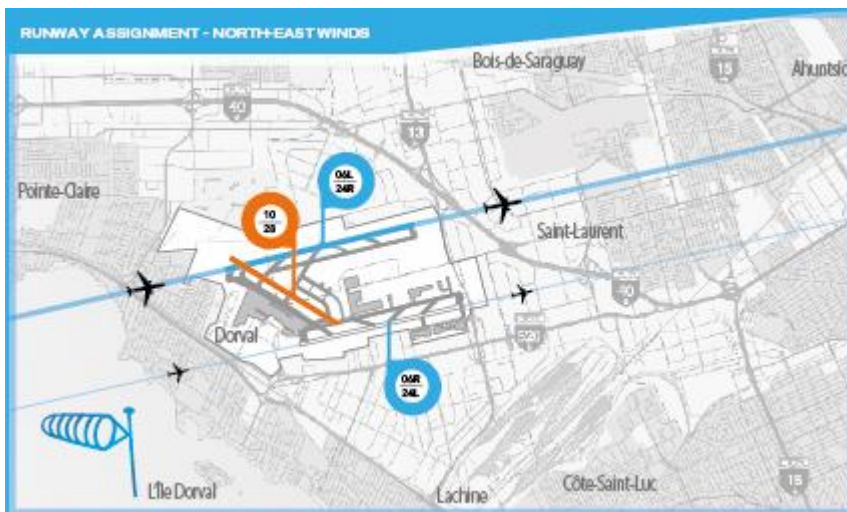
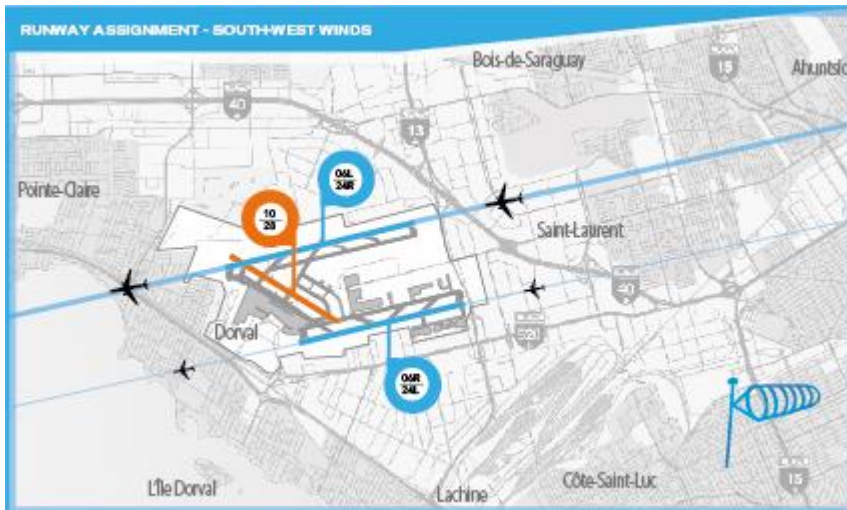


# MONTRÉAL-TRUDEAU LA GESTION DU CLIMAT SONORE SOUNDSCAPE MANAGEMENT



Runway assignment:

Mondays to Saturdays – 7 a.m. to 11 p.m. :



Runway 10-28 is closed from May to October.