



SOUNDSCAPE

SEPTEMBER 3, 2019

AIRSIDE CONSTRUCTION WORK FROM SEPTEMBER 3 TO MID-DECEMBER 2019 - RUNWAY 06L-24R AT REDUCED LENGTH

Aéroports de Montréal will be continuing construction work for the rehabilitation of runway 06L-24R. This work is necessary to keep the runway to reliability and safety standards. This phase of the work will be from September 3 to mid-December 2019.

During this period, **from September 3 to mid-December 2019**, runway 06L-24R will be operating with a displaced threshold which reduces the length of the runway during the construction work.

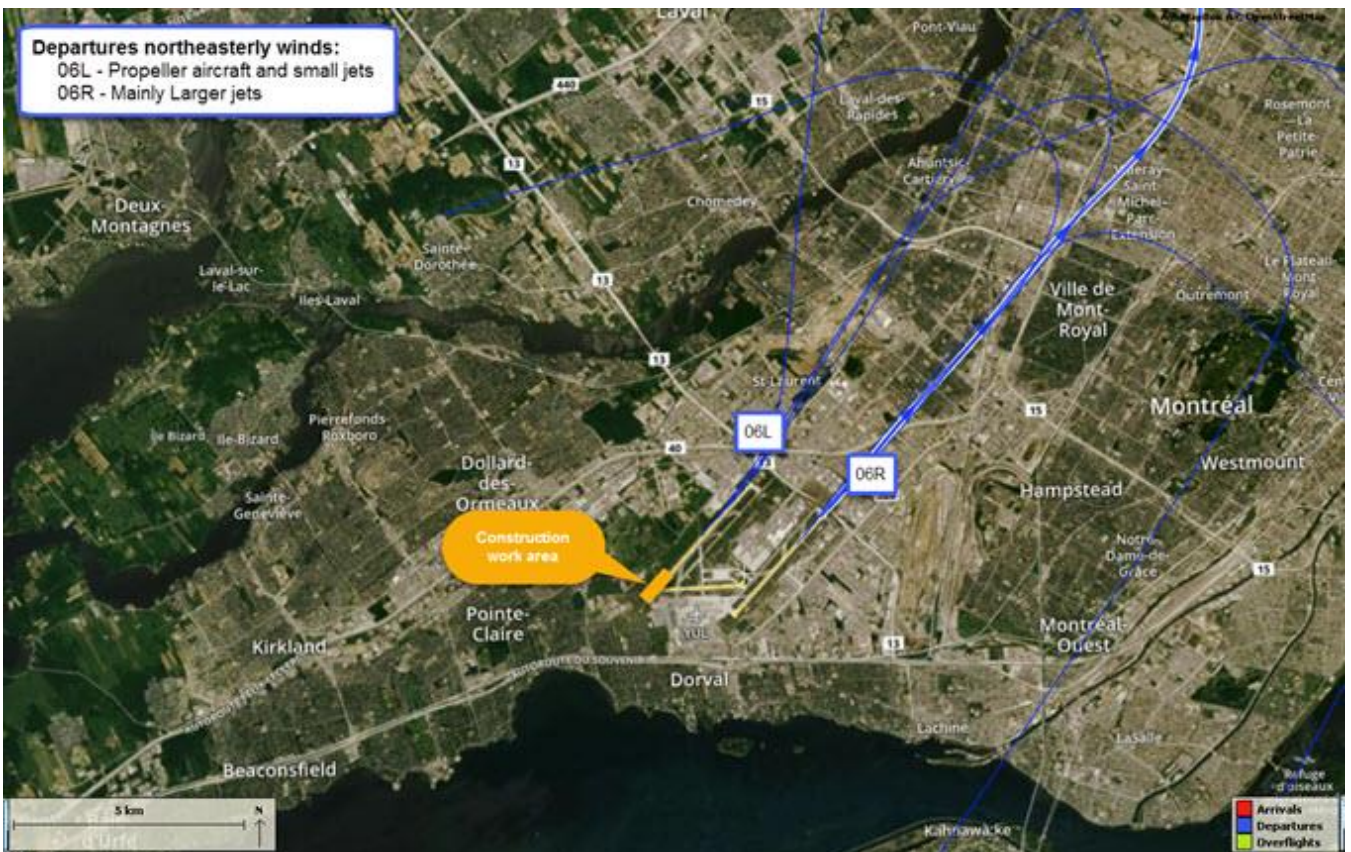
This runway will be mainly used by propeller aircraft (Dash-8, Q400) and small jets (CRJ, Embraer, B737, A319). As of mid-December, when this phase of the work is complete, the runway will be back operating at full length.

Impacts: Large jets (A330, B777, B787) will be mainly assigned to runway 06R-24L. Residents of south Dorval, south Saint-Laurent, Town of Mont-Royal, Villeray as well as Rosemont-Petite-Patrie will notice an increase of this type of aircraft overflying their area.

In order to put in place the displaced threshold, **runway 06L-24R was closed from 11 p.m. on September 2 until mid-afternoon on September 3.**

Afterwards, and until mid-December, runway assignment will be as follows:







Runway 10-28 is closed during the work.

If you would like to subscribe to ADM's newsletter on soundscape management, please write to: info@admtl.com.



Si vous ne désirez plus recevoir l'infolettre, [cliquez ici](#).
 If you do not wish to receive this newsletter, please [click here](#).