



SOUNDSCAPE AUGUST 9, 2019

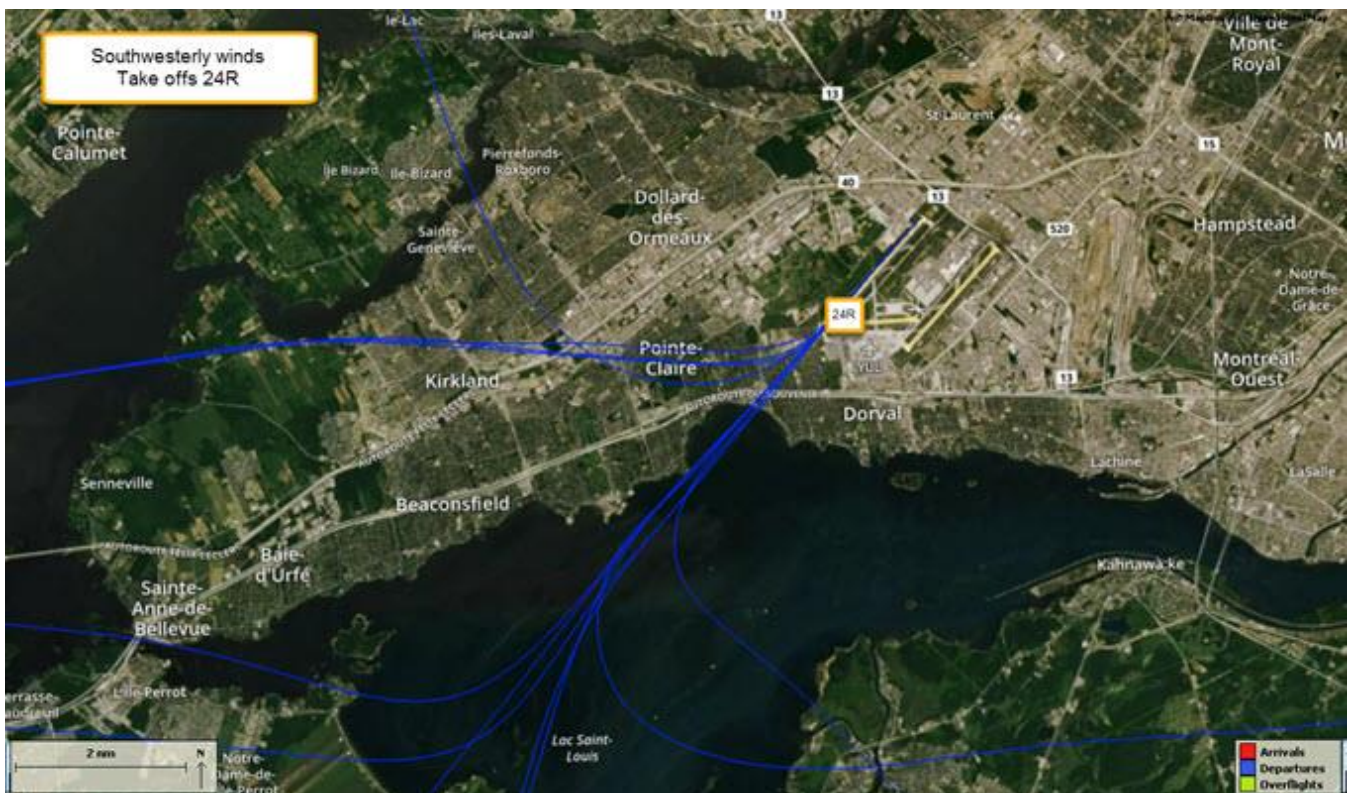
FROM AUGUST 9 TO SEPTEMBER 1, 2019 CONSTRUCTION WORK - TAXIWAY OF RUNWAY 06R-24L MODIFIED RUNWAY ASSIGNMENT IN SOUTHWESTERLY WIND CONDITIONS

In order to keep its facilities to reliability and safety standards, Aéroports de Montréal is undertaking construction work on the taxiway of runway 06R-24L.

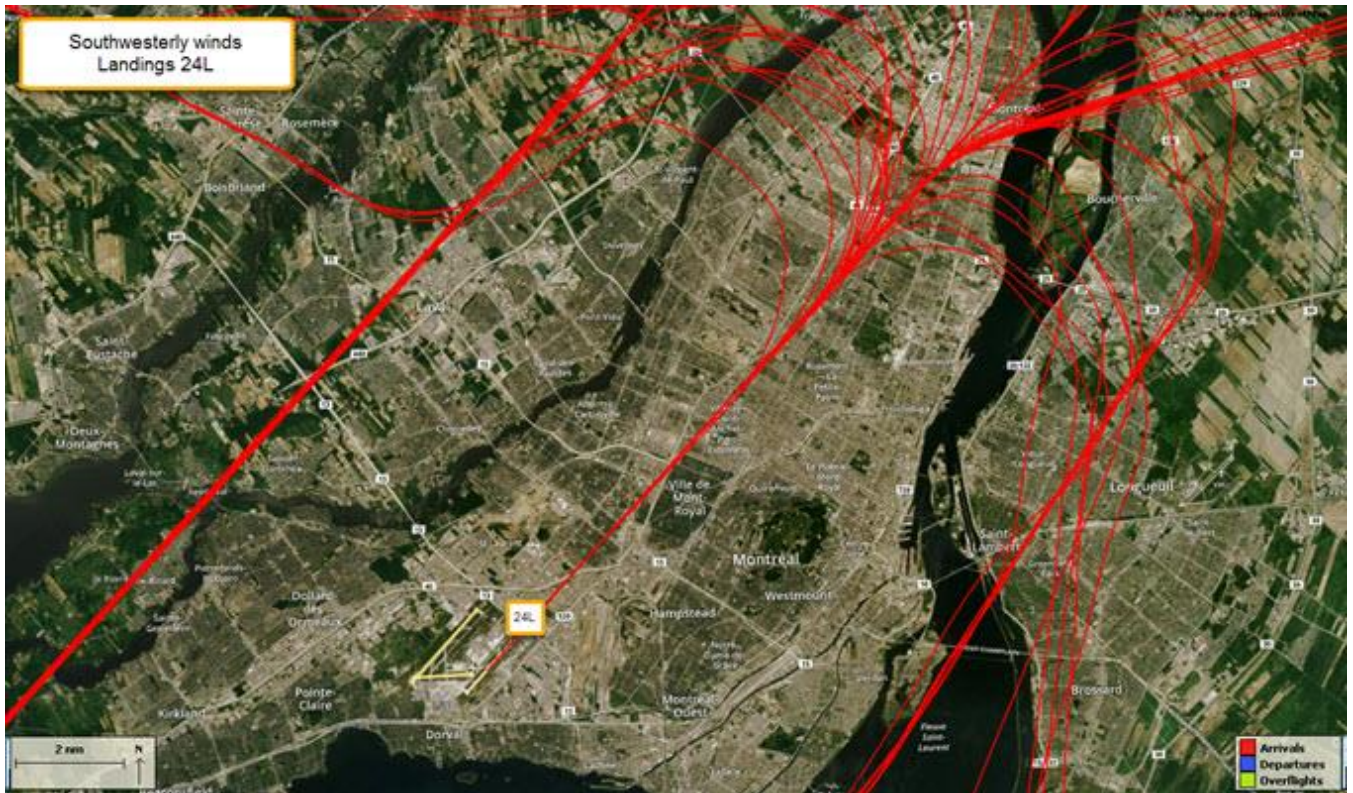
From 11 p.m. on August 9 to September 1, 2019, runway assignment will be modified in southwesterly wind conditions. Residents of Rosemont, Villeray, Town of Mount-Royal north and Saint-Laurent south will observe an increase of overflights landing at the airport while the number of take offs will increase in the areas of Dorval north and Pointe-Claire.

Southwesterly winds (modified assignment):

- Take offs: mainly runway 24R (Dorval north, Pointe-Claire)

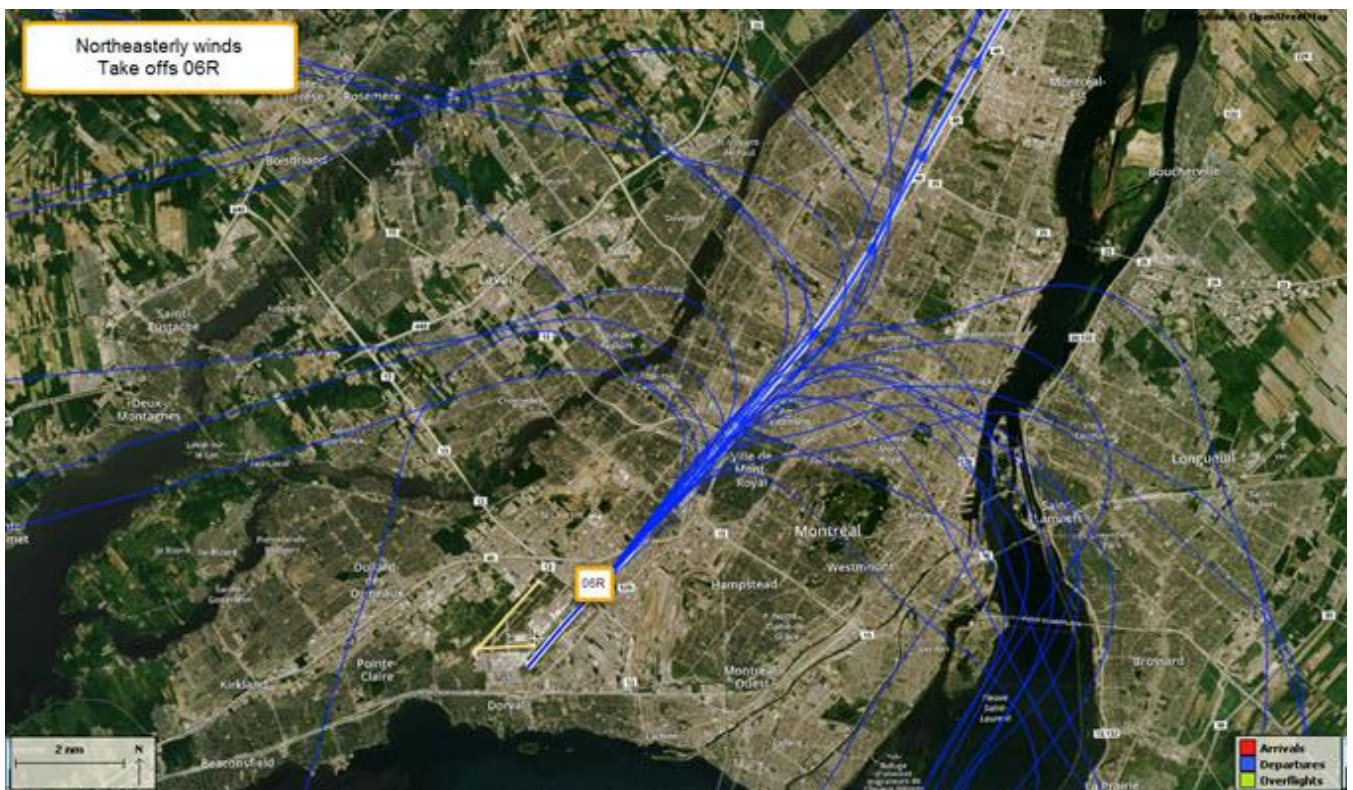


- Landings: mainly runway 24L (Rosemont, Villeray, TMR north, Saint-Laurent south)

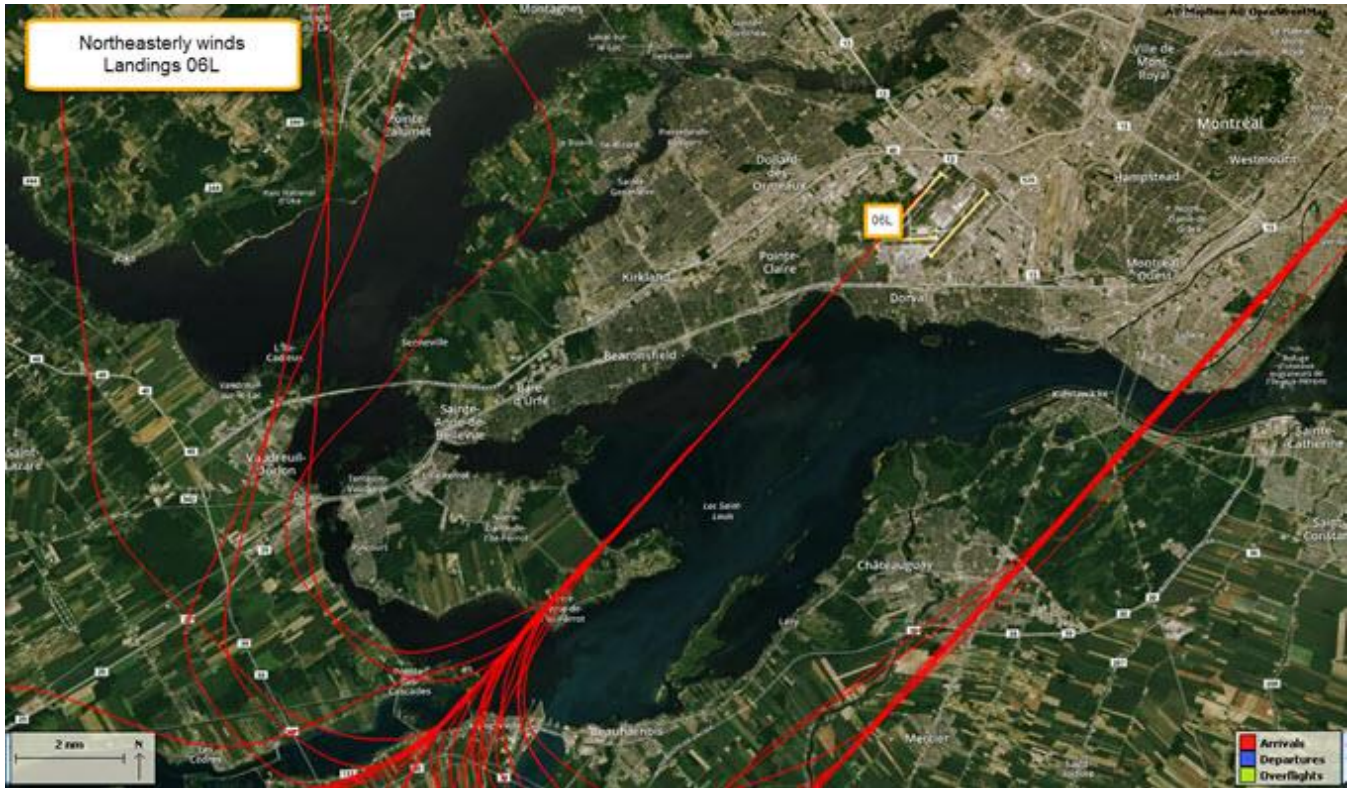


Northeasterly winds (usual assignment):

- Take offs: mainly runway 06R



- Landings: mainly runway 06L



Runway 10-28 is closed during the work.

If you would like to subscribe to ADM's newsletter on soundscape management, please write to: info@admtl.com.