



**SOUNDSCAPE ADVISORY COMMITTEE**

**MONTRÉAL- PIERRE-ELLIOTT-TRUDEAU**  
**INTERNATIONAL AIRPORT**

**SUMMARY**

**Meeting of May 4, 2018**



Following is a summary of the meeting of the Soundscape Advisory Committee that was held on May 4, 2018 at Aéroports de Montréal's Head Office.

Present :

- Stéphane Lapierre, Aéroports de Montréal
- Martin Massé, Aéroports de Montréal
- Edgar Rouleau, Mayor, City of Dorval
- John Belvedere, Mayor, City of Pointe-Claire
- Émilie Thuillier, Mayor, Borough of Ahuntsic-Cartierville  
– representative of the City of Montréal
- Jérôme Gagnon, NAV Canada
- Luc Tremblay, NAV Canada
- Guy Redah, Transports Québec
- Myrka Manzo, Air Canada
- Nicolas Pelletier, Air Transat
- Keith Lawless, Air Transat
- Karl Brochu, Aéroports de Montréal
- Anne Marcotte, Aéroports de Montréal
- Lyne Michaud, Aéroports de Montréal
- Laurie Talluto, Aéroports de Montréal

Membres absents :

- Alan DeSousa, Mayor, Borough of Saint-Laurent
- Donald Doskas, American Airlines
- Richard Beaudet, Transport Canada
- Nathalie Beaulieu, Skyservice

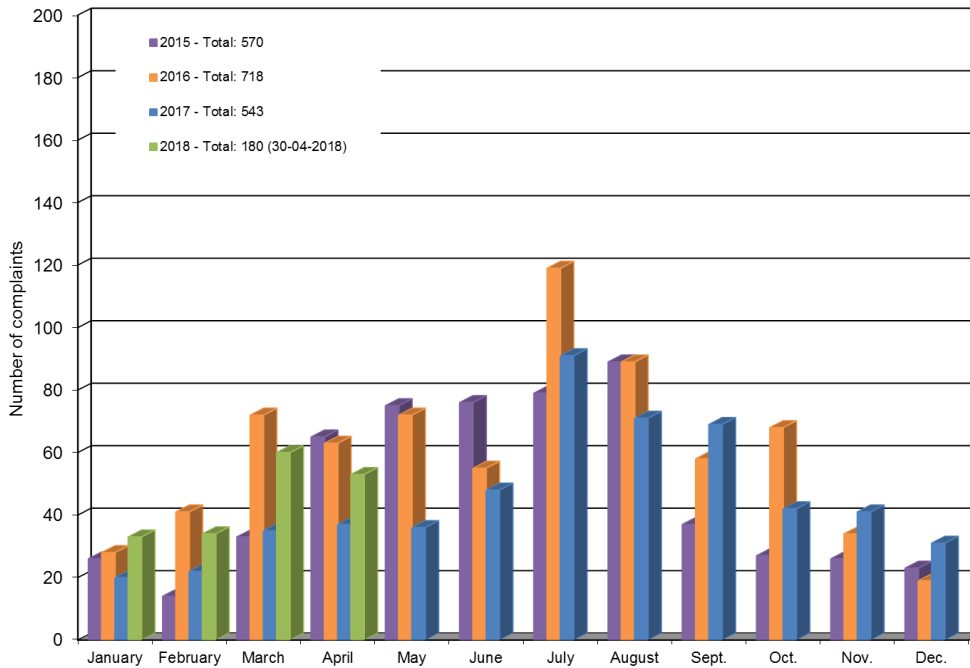
Secrétaire :

- Anne-Marie Urban, Aéroports de Montréal



**A. INDICATORS – JANUARY TO APRIL 2018**

**NOISE COMPLAINTS STATISTICS**

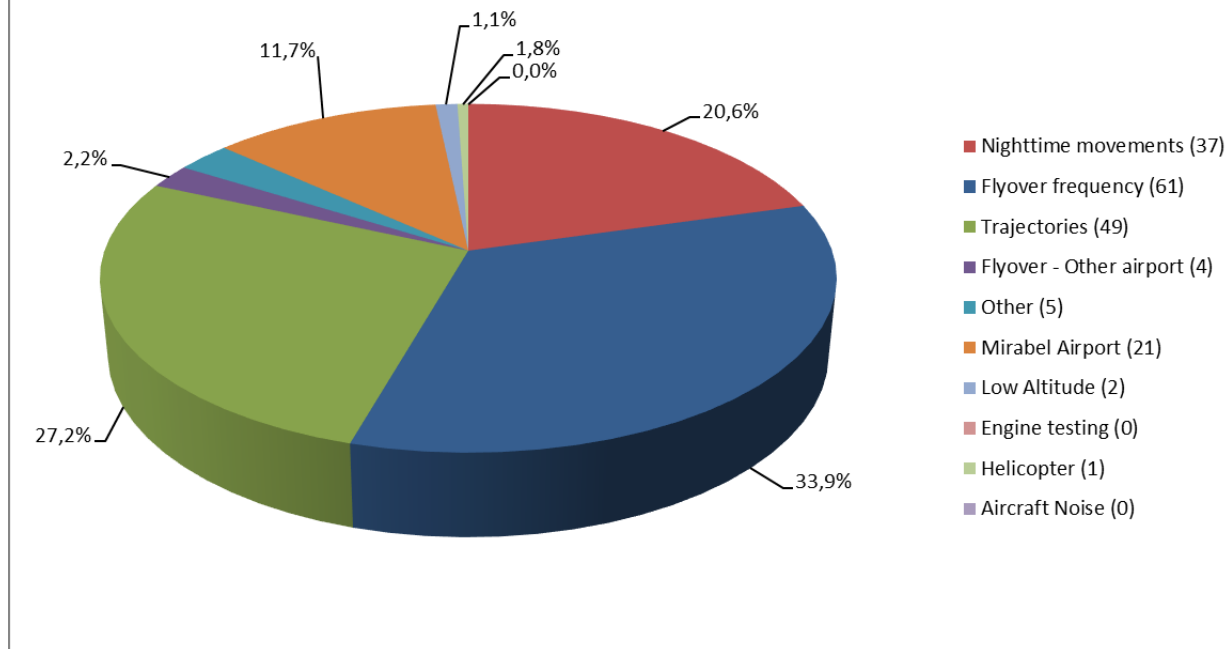


January to April 2018 vs 2017:

- 58% increase of complaints (180 vs 114)
- 6% decrease in the number of complainants 59 vs 63
- In 2018, 63% of the complaints were filed by the same 3 people



**Motive of complaints - Winter 2017**



# MONTRÉAL-TRUDEAU

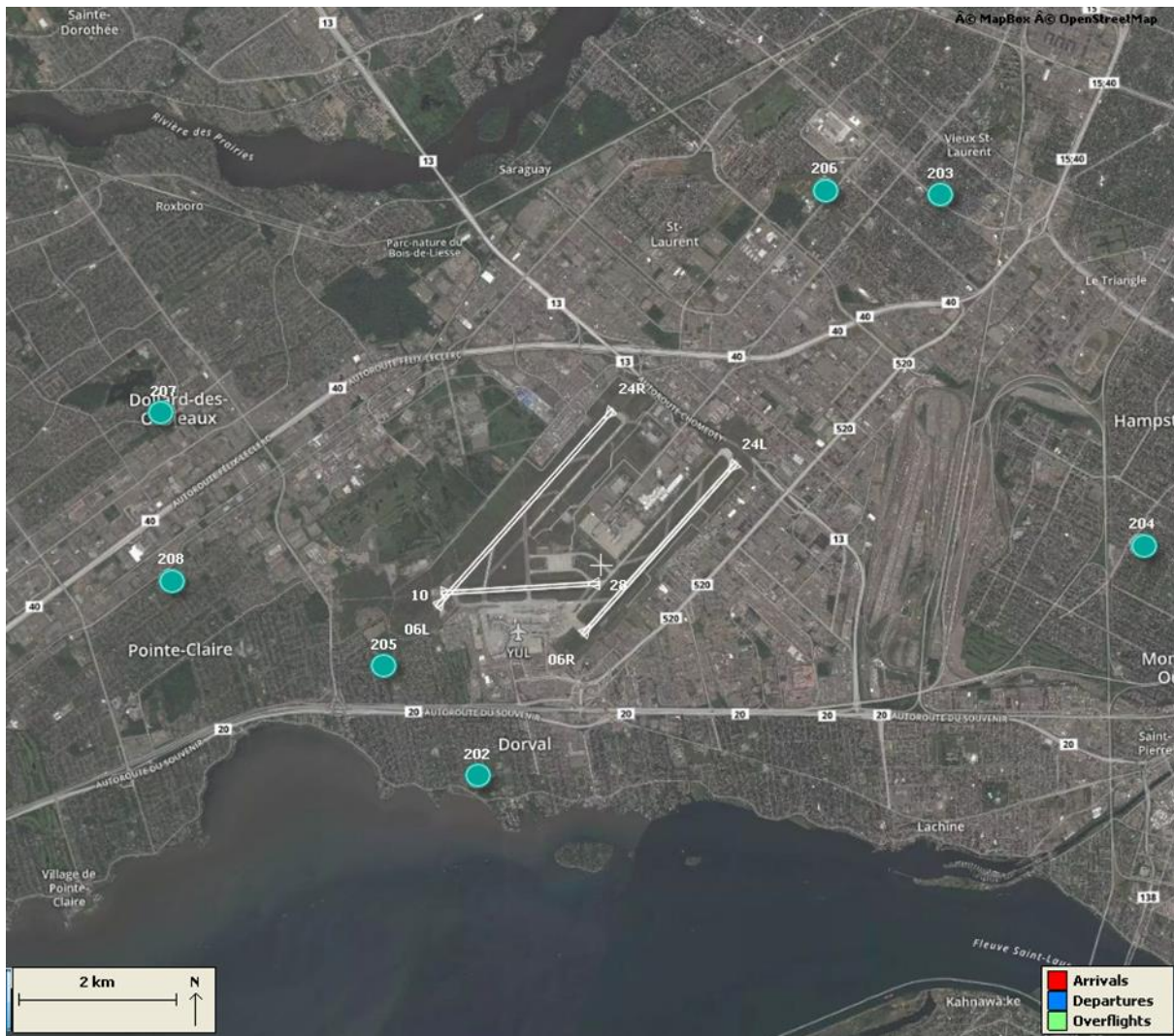
## LA GESTION DU CLIMAT SONORE

## SOUNDSCAPE MANAGEMENT



### MONTHLY LEQ

Location of noise-monitoring stations:



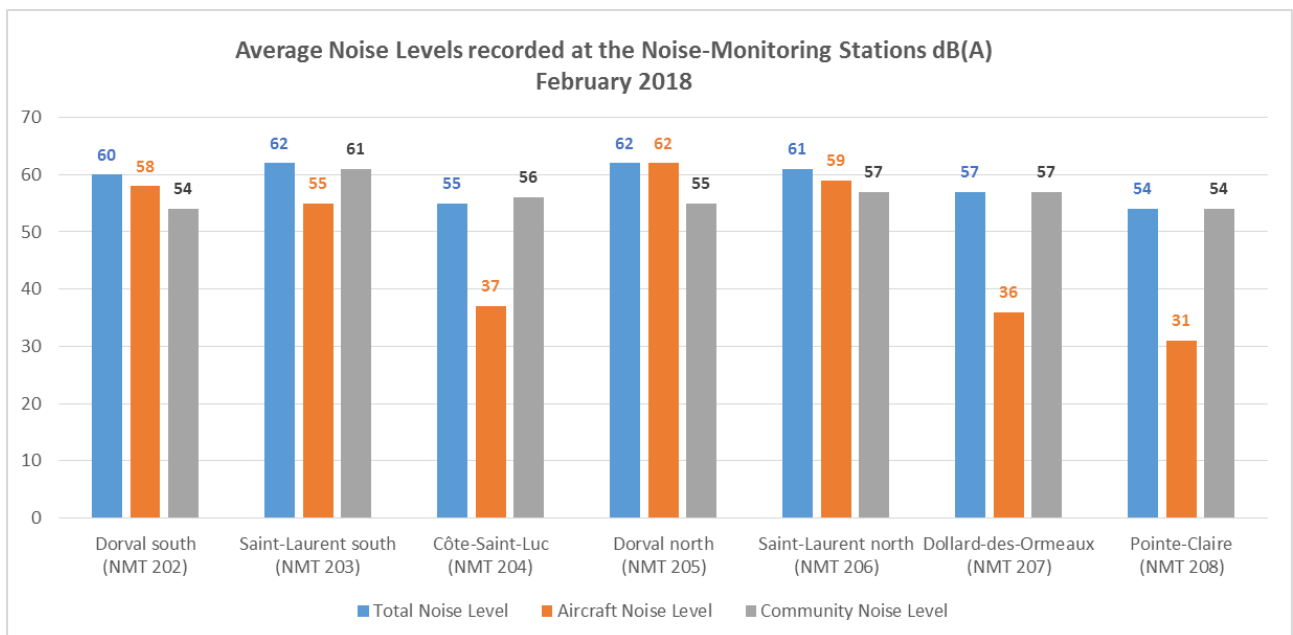
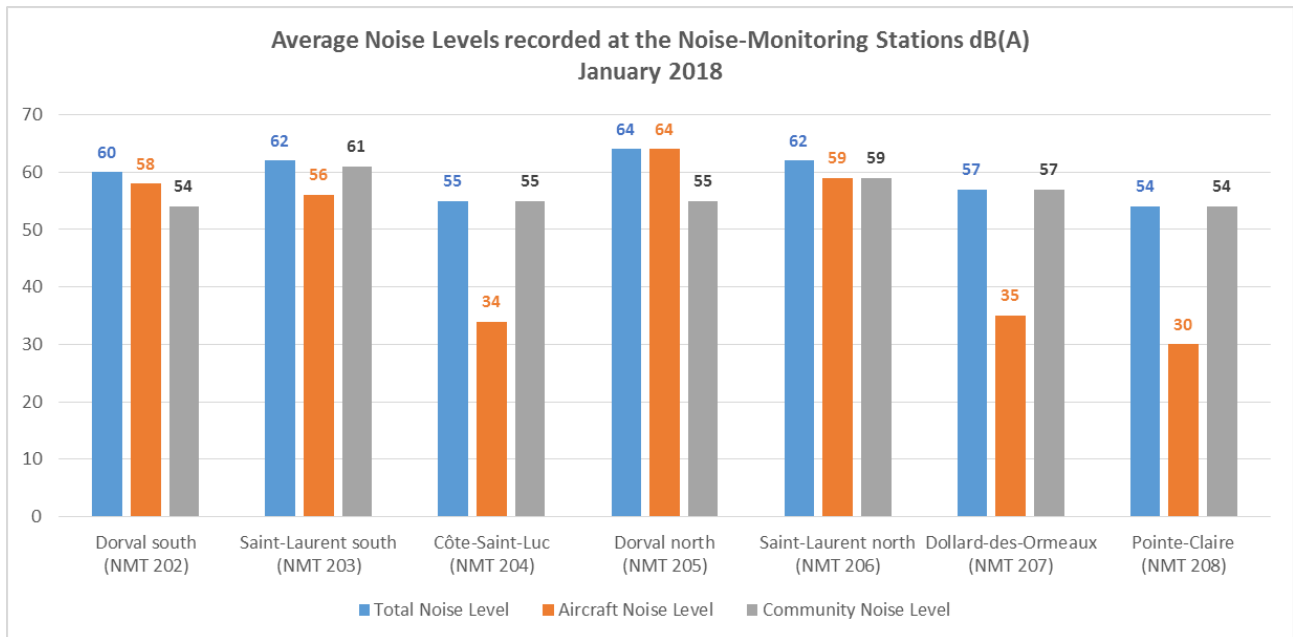
# MONTRÉAL-TRUDEAU

## LA GESTION DU CLIMAT SONORE

### SOUNDSCAPE MANAGEMENT



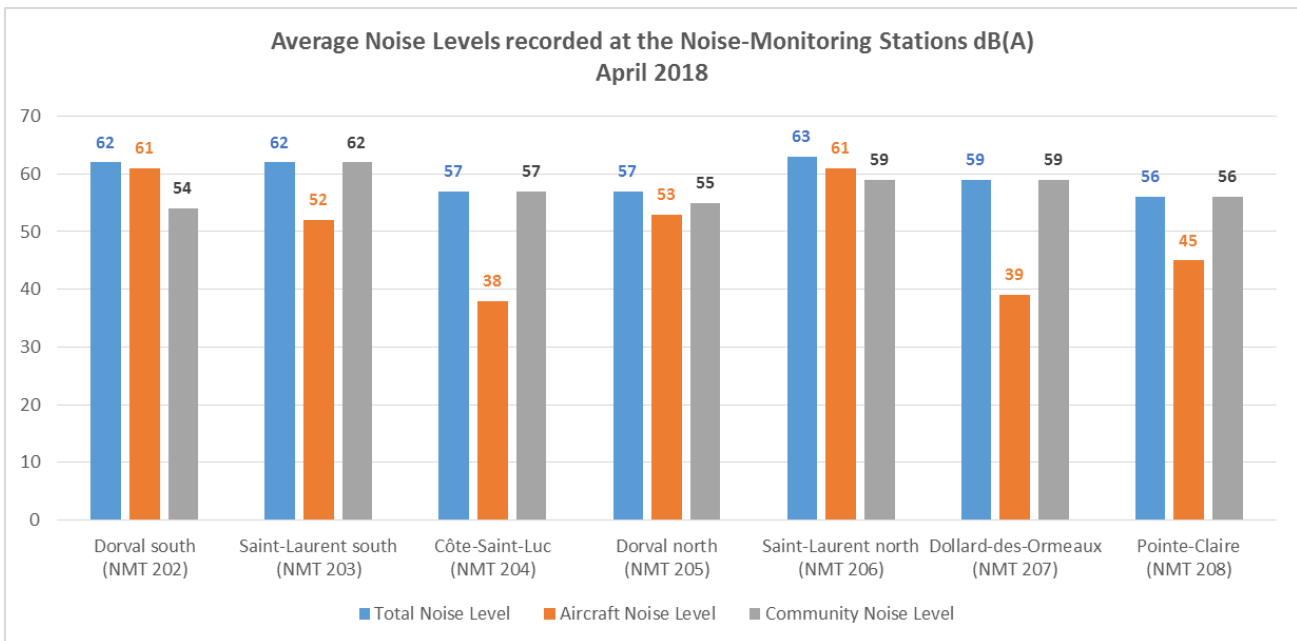
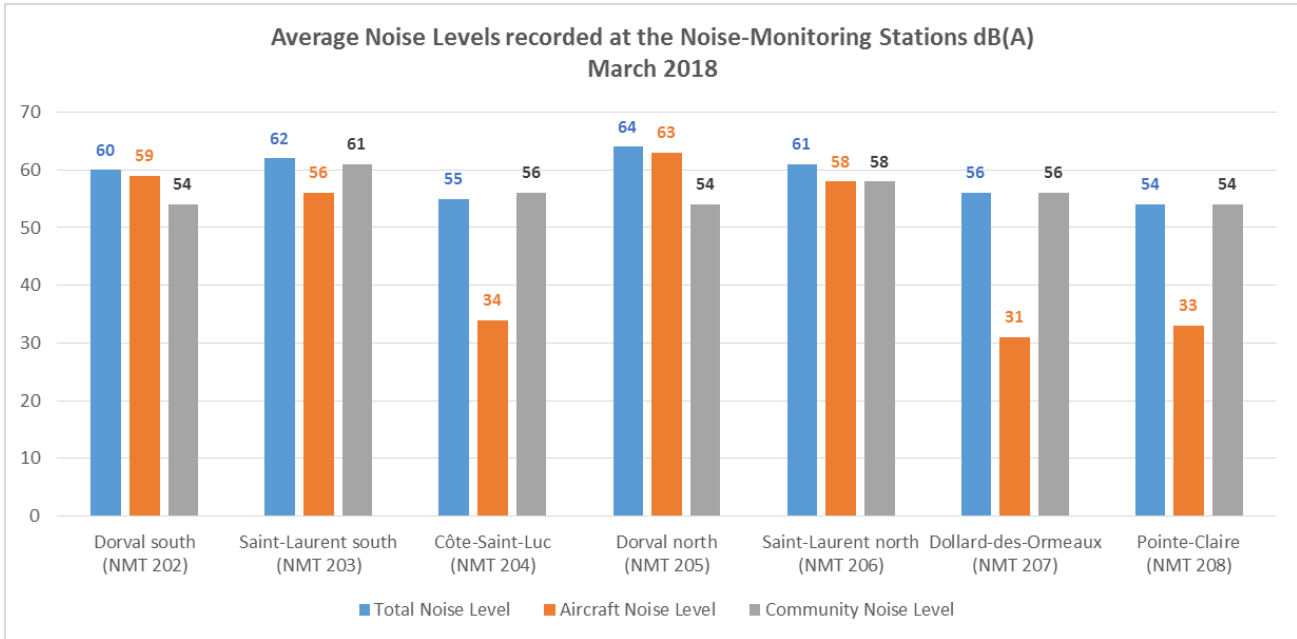
The Leq average noise levels recorded at the noise-monitoring stations are presented. There are three types of report: total noise (all noise sources) aircraft noise, and community noise (train, truck and other noise not related to aircraft movements). The -21 dB(A) noise-attenuation factor due to home insulation, used by the World Health Organization (WHO), must also be considered.



# MONTRÉAL-TRUDEAU

## LA GESTION DU CLIMAT SONORE

### SOUNDSCAPE MANAGEMENT



# MONTRÉAL-TRUDEAU

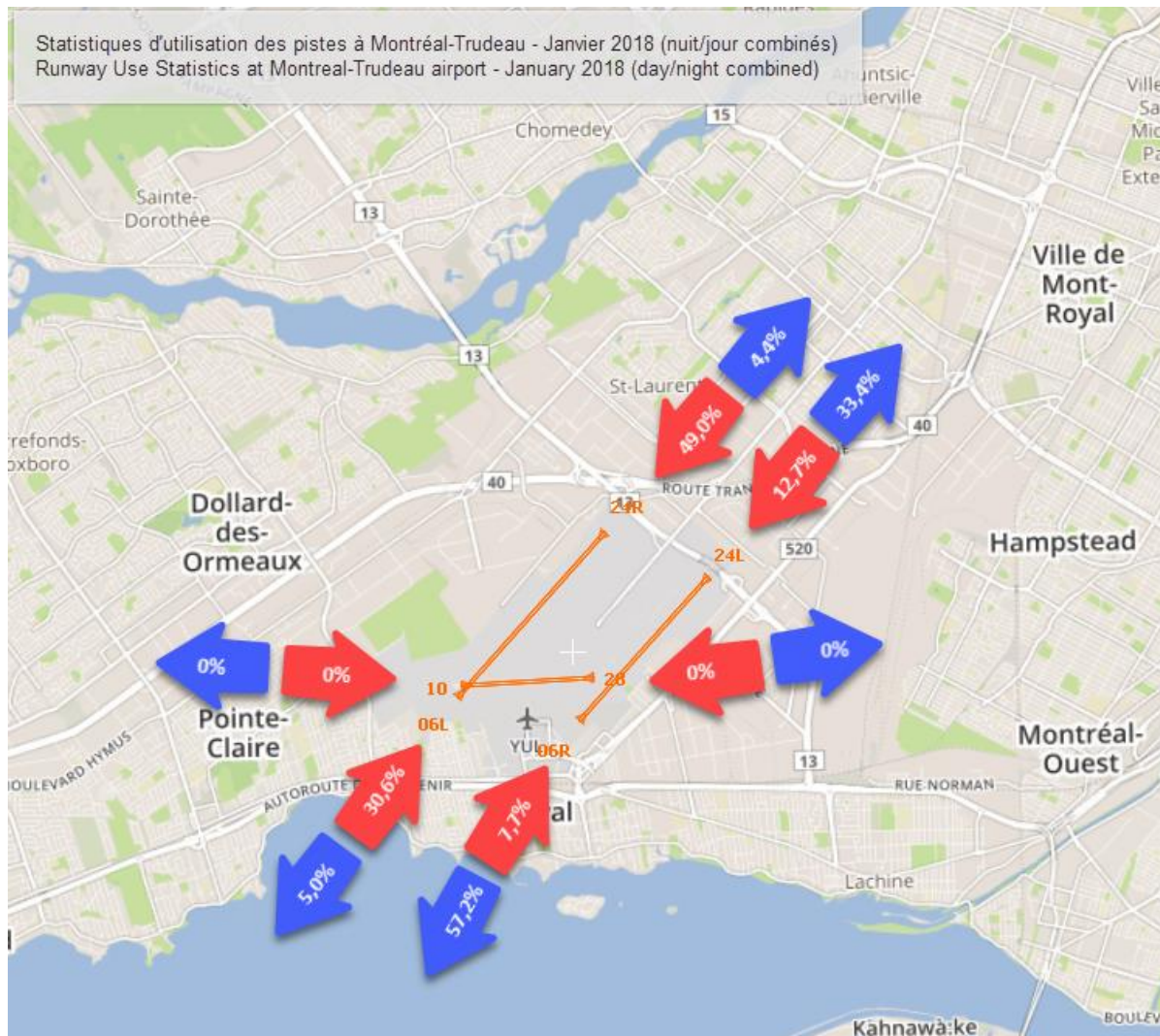
## LA GESTION DU CLIMAT SONORE

### SOUNDSCAPE MANAGEMENT



## RUNWAY USE STATISTICS

January :





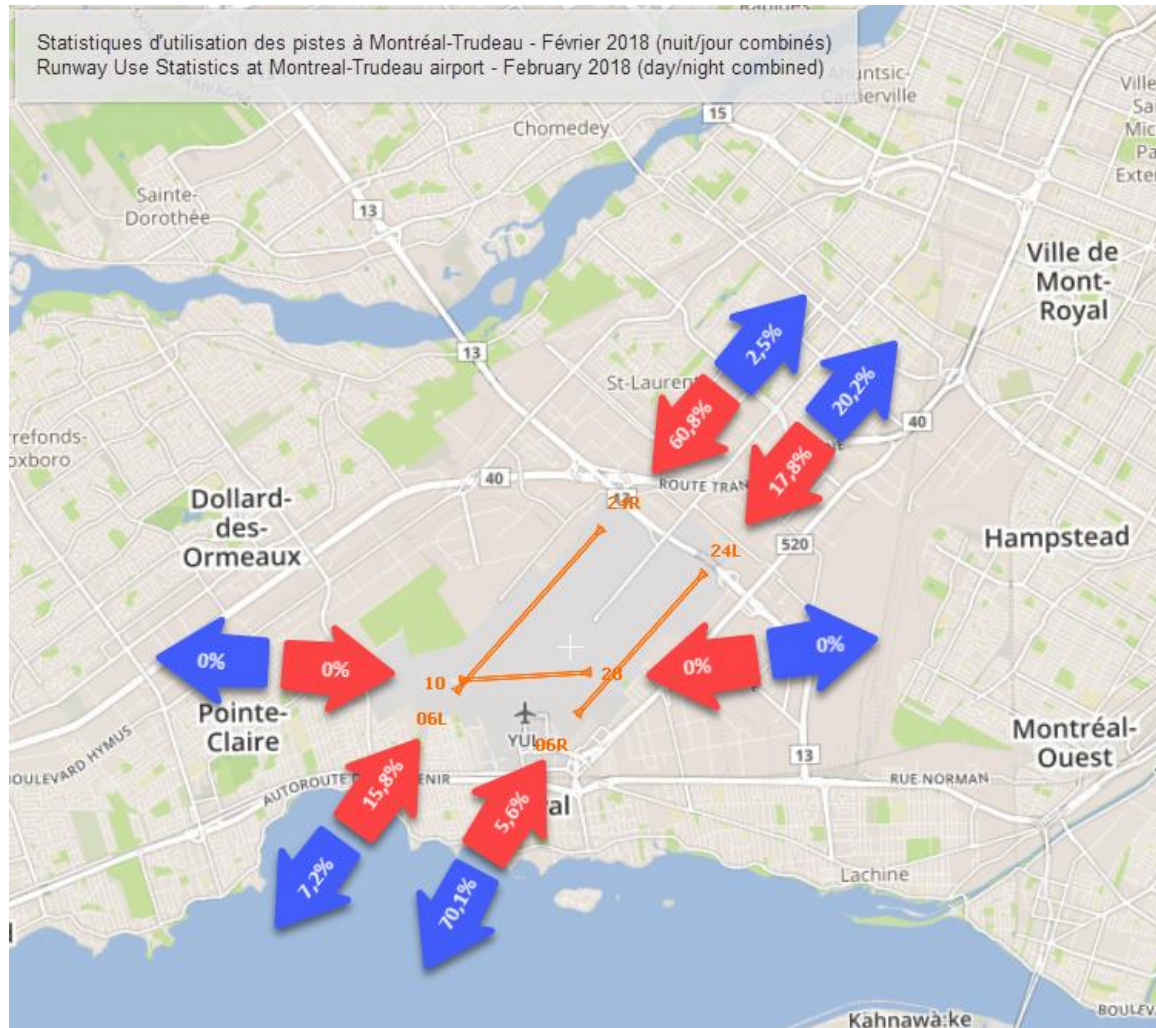
# MONTRÉAL-TRUDEAU

## LA GESTION DU CLIMAT SONORE

## SOUNDSCAPE MANAGEMENT



February:



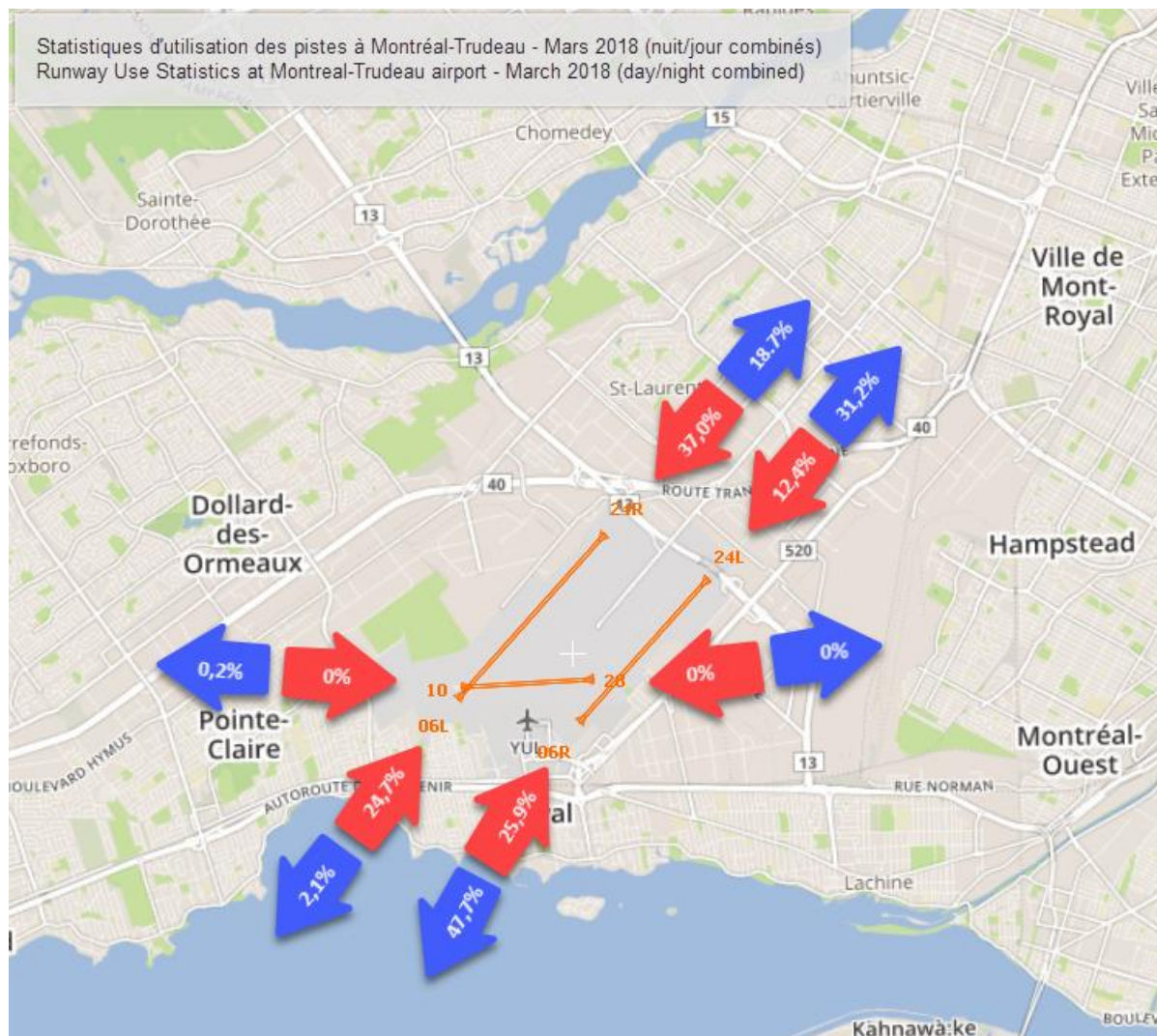
# MONTRÉAL-TRUDEAU

## LA GESTION DU CLIMAT SONORE

### SOUNDSCAPE MANAGEMENT



March:



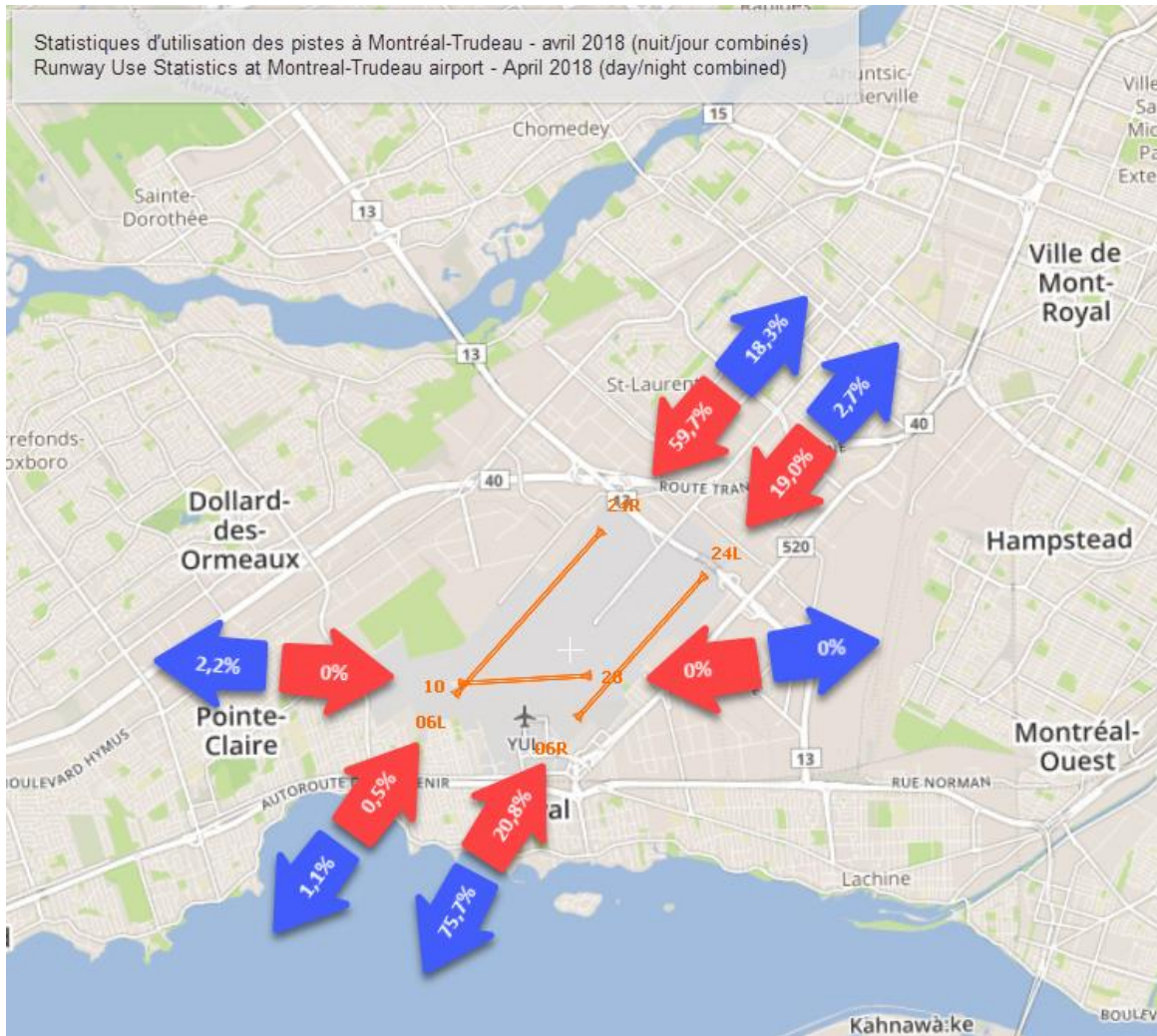
# MONTRÉAL-TRUDEAU

## LA GESTION DU CLIMAT SONORE

## SOUNDSCAPE MANAGEMENT



April:



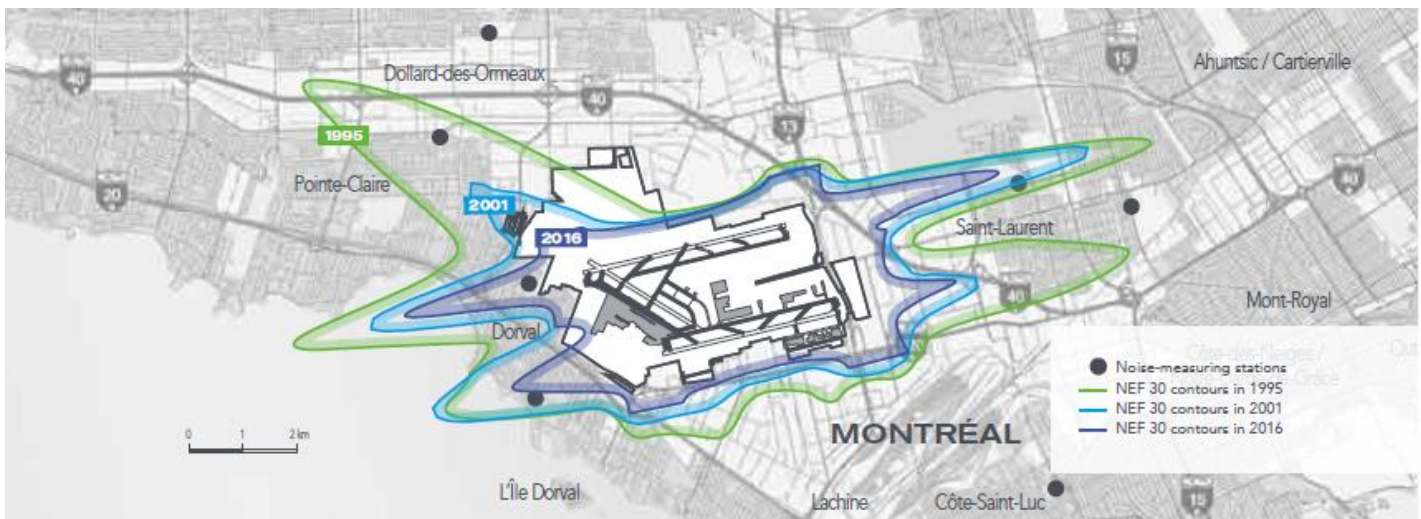
# MONTRÉAL-TRUDEAU

## LA GESTION DU CLIMAT SONORE SOUNDSCAPE MANAGEMENT



### B. NEF 2016

- Montréal-Trudeau noise footprint – 19.2 km<sup>2</sup> in 2016, a decrease of 55% compared with the 42.2 km<sup>2</sup> area recorded in 1995.
- 90% reduction of the population since 1995, from 39,421 to 4,272 people in 2016.





### C. CONSTRUCTION WORK – Runway 06L-24R - Taxiway and access lanes:

#### First phase of the work – March 15 to June 30\*:

- Taxiway of runway 06L-24R closed
- Runway 10-28 open – departures only in southwesterly wind conditions
- Usual operations in southwesterly wind conditions :
  - Departures mainly 24L et 28
  - Arrivals mainly 24R
- Impacts in northeasterly wind conditions:
  - Departures mainly 06L (Saint-Laurent north, Ahuntsic-Cartierville)
  - Arrivals mainly 06R (Dorval south)

\*This phase of the work was completed on June 22.



# MONTRÉAL-TRUDEAU

## LA GESTION DU CLIMAT SONORE SOUNDSCAPE MANAGEMENT



- Runway assignment during the work – northeasterly wind conditions :

